

Live to Serve



Regn. No. TSI/16/1981

# AMAR SEVA SANGAM



**ANNUAL REPORT  
2012- 2013**

# MOMENTS OF PRIDE



New Tailoring Unit  
Inauguration by  
**Dr. S. Sivathanu Pillai**, C.E.O.,  
BrahMos on 27.3.2013




**Vasudeo Ganesh Kulkarni**  
**Vidhya Vardinini Sadan** was  
inaugurated on 2.9.2012 by  
**Shri Mukund Kulkarni**



**Dr. M.S. Swaminathan**,  
Patron-in-chief  
receiving the Jindal Prize on  
behalf of **Amar Seva Sangam** at  
New Delhi on 4.12.2012





## Amar Seva Sangam

First Patron-in-Chief – Bharat Ratna Late Shri C. Subramaniam  
Patron-in-Chief - Dr. M.S. Swaminathan  
Patrons - Shri N. Vaghul and Shri S.V. Mony

### Advisory Board:

**Shri C. Samayamoorthy, I.A.S.,**  
District Collector, Tirunelveli  
Ex-Officio Chairman – Amar Seva Sangam

S. Sivasankari, Chennai.  
Sulochana Srinivasan, Mumbai  
S.S. Rajsekar, Chennai.  
Sulochana Krishnamurthy, Canada  
Admiral L. Ramdoss,  
M. Gopalakrishnan, Chennai.  
T.A.P. Varadakutty, Chennai.  
Rtn. V. Bhaskaran, Shencottah  
S. Raman, Shencottah  
A. Pitchai, I.A.S., Chennai.  
G.V. Muthurama Sharma, Chennai.  
K. Narayanan, Chennai.  
S.R.S Ayyar, Thiruvananthapuram  
Kamala Iyer, Chennai.  
Mrs. M. Kuttiammal, Ayikudy  
M.P. Vasimalai, Madurai.  
Dr. M.S. Ravi, Chennai.  
Dr. K.S. Subramanian, Chennai.  
S. Narayanan, Bangalore  
Mani Narayanasamy, Bangalore  
Er. V. Ramachandran, Chennai.  
Dr. S. Sundar, Chennai  
P.K.A. Narayan, Vishakapatnam  
R. P. Krishnamachari, Chennai  
Mukund Kulkarni, Kolkatta  
Rajeev Mecheri, Chennai

### PAST EX-OFFICIO CHAIRMEN:-

R. Velu, I.A.S., Chennai  
Dr. R. Jeyaraman, I.A.S., Chennai  
Dr. Niranjani Mardi, I.A.S., Chennai  
V.K. Jeyakodi, I.A.S., Chennai  
K. Dhanavel, I.A.S., New Delhi  
Sunil Paliwal, I.A.S., Chennai  
Atul Anand, I.A.S., Chennai  
G. Prakash, I.A.S., Thoothukudi  
R. Palaniyandi, I.A.S., Chennai  
Dr. R. Selvaraj, I.A.S., Chennai

### STATUTORY AUDITORS:

M/s. M. Srinivasan & Associates  
Chartered Accountants, Chennai.

### INTERNAL AUDITORS

M/s. J.V. Ramanujam & Co.,  
Chartered Accountants, Chennai.

### LEGAL ADVISOR:-

T.S.R. Venkataramana, Madurai

### VISITING DOCTORS:

Dr. P.R. Shivaji, M.S., DNB (Uro), Surandai  
Dr. S. Muthuraman, M.S. (Ortho), Tenkasi

### EXECUTIVE COMMITTEE:

S. Ramakrishnan, President  
M.R. Sreenivasan, Vice-President  
S. Sankara Raman, Honorary Secretary  
S.S. Kandaswamy, Joint Secretary  
S. Pattammal, Treasurer  
K. Chidambaram, Member  
Dr. S. Sumathi, Member  
Dr. K. Murugiah, Member



# ABOUT US



*I* would like to share with you a rare experience provided by a “HUMAN WONDER” who, despite total paralysis of his whole body, has remained undaunted for the last ten years and more, and had striven to help the active, inspiring social service.

In 1981, when he was only 27 years and a desperate cripple of six years, who had to be helped by others around him for every little movement of any of his limbs, he had the courage of conviction, injected and inspired by his mentor Dr.Amar Singh, and dared to establish a service organisation and christened it as “AMAR SEVA SANGAM” by way of paying his humble but sincere gratitude and tribute to the Doctor who has helped him out of the jaws of death.....

I could well see for myself how this Ramakrishnan, even as he is progressing with faith and determination in his endeavors, is ever more dedicating himself to the upliftment of the poor and the disabled so that they may lead their lives without being a burden on others!

Interestingly, another crippled young man, Sankara Raman, Chartered Accountant with a sizeable practice of his own in Madras who happened to visit Ayikudy in January 1992, out of curiosity to see for himself what Ramakrishnan was doing there, lost no time in bidding good-bye to his lucrative auditing practice and settled down in Ayikudy to help and work with Ramakrishnan. Together they are striving to build Amar Seva Sangam in the true spirit of service to humanity.

May I also hope that Ramakrishnan and Sankara Raman will go on and on undaunted with the good and noble task of inspiring us with their own dedication and selfless service!

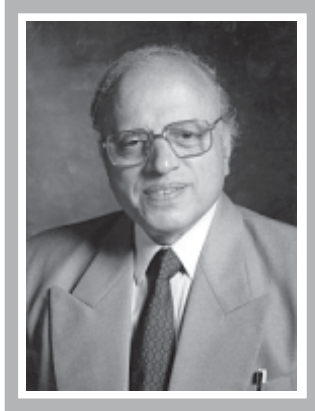
*- A benediction from Bharat Ratna Late Shri C. Subramaniam, our first Patron-in-Chief - Published in Bhavan's Journal, Sep. '93*



---

**PROF M S SWAMINATHAN**

Founder Chairman and Chief Mentor  
UNESCO Chair in Ecotechnology  
M S Swaminathan Research Foundation



# Message

Amar Seva Sangam under the inspiring leadership of Pujya Shri Ramakrishnanji and Pujya Shri Sankararamanji is serving as the flagship of the efforts made in our country to provide a new life to the differentially abled children, women and men. Amar Seva Sangam is a unique organization led by unique individuals. I wish the organization continued success in its efforts to bring cheer and hope in the lives of thousands of differentially abled children.



M S Swaminathan

---

Third Cross Street, Taramani Institutional Area, Chennai - 600 113

Tel: +91 44 2254 2790 / 2254 1229 / 2254 1698, Fax: +91 44 2254 1319, Email: [founder@mssrf.res.in](mailto:founder@mssrf.res.in)



**D.R. Kaarthikeyan**  
Padmashri Awardee

**Former**

Chief of SIT-CBI, Rajiv Gandhi Assassination Case  
Director, Central Bureau of Investigation  
Director General, National Human Rights Commission  
Special Director General, Central Reserve Police Force

**Advisor :** Law-Human Responsibilities-Corporate Affairs

---



Disability is part of diversity of creation. They are not a burden on the society. All they want the rest of the society is not pity but to create a level playing ground and to create equal opportunities.

There have been personalities like Helen Keller (1880-1968), who suffered multiple handicaps, but yet made a huge contribution to society.

Stephen Hawkins, the most famous living scientist, was described as the most “Disabled Genius”. – “Part Machine and Part Human”.

Our own Sudha Chandran, a great dancer had her right leg amputated after an accident . she did not give up. After being fitted with an artificial leg, she has come to be celebrated as the most accomplished and acclaimed dancer of Indian sun continent.

There have been many such wonderful human beings who can be described as “Disabled or Handicapped”, but have accomplished excellence in their own chosen fields.

Even in Amar Seva Sangam many “disabled”, including Mr. Ramakrishnan and Mr. Sankara Raman have been performing admirably.

They have proved that the only disability in life is a bad attitude. Disability is a matter of perception. If you can do anyone thing well, you are needed by the world. Disability in some aspect of life is not relevant; What matters is ability in doing something.

I admire the noble service being rendered by Amar Seva Sangam and wish them all success.

**D.R. Kaarthikeyan**  
Padmashri Awardee

102, Ground Floor, Anand Lok, New Delhi - 110 049, India.  
Phone : 91 - 11 - 4601 3255

*Message*



## *Our*

### *Mission*

**AMAR SEVA SANGAM's** mission is to empower the disabled citizens by establishing a '**Valley for the Disabled**' as a Rehabilitation and Development Centre for the region and developing models for self-help initiatives by integrating the disabled individuals with the society for improved living conditions in the village.

### *Vision*

It is our vision to establish a Valley for the Disabled, whereby physically/mentally challenged persons live in a pro-active society where equality prevails irrespective of physical, mental or other challenged with the rest of the society. It is a futuristic vision whereby Amar Seva Sangam plays the role of an enabling agent to get the physically/mentally challenged "equality of status, equality in opportunities and equality in access". It is a society where people are identified as differentially abled.

### *Quality Policy*

**Amar Seva Sangam** is committed to satisfy physically challenged service users by empowering them to have an equal participation in the society. This is achieved by providing them the appropriate rehabilitation services of excellent Quality and continuously improving the same.

#### **Focus area to achieve the above are:**

1. Work closely with society, various NGOs and governmental organizations.
  - a. To enhance awareness on the need and means of empowerment.
  - b. To enhance the service facilities in the organization for rehabilitation to cope up with various challenges of all disabilities.
2. Make the organization as a "System driven one" by ensuring effective implementation and maintenance of Quality Management System and continuously improving the same.
3. Improving the quality of rehabilitation services by enhancing the competence of the human resource personnel in the organization.





Amar Seva Sangam has successfully completed nearly 32 years of distinguished service for the cause of the differently abled by providing shelter, medical help, vocational training, new avenues of employment, rehabilitation besides supplying necessary mobility appliances.

Started in 1981 in a humble way with a few students the Sangam had flourished and reached new heights. **Today Amar Seva Sangam is a premier institution in the field of Disability Management in the country.** These were possible only because of the support and patronage of well wishers who stood by our side during times of crises. We are all indebted to them for their support.

Effective cost control measures, strict surveillance and constant monitoring had resulted in producing much better results for the year 2012-13. The working results of 2012-13 are not gratifying. More efforts will have to put in to improve the financial condition viz., stepping up our vigil and monitoring to continue to obtain still better working results.

Thirty two years back when the Sangam was started we ourself did not anticipate the Sangam to grow to this level with multifarious activities for the development of disabled persons. In 1990 the new initiatives exclusively for the development of the disabled persons began. Our main goals were to help the differently abled, give them medical assistance, provide them good education, help the rural poor, orphans and aged besides promoting family/women's welfare. But subsequently we gradually increased our area of activities. During the year we started a new tailoring block, an Early Intervention Centre, an Institute of Rehabilitation Sciences besides bifurcating our activities into rehabilitation and income generation. Hence, it was decided to start the Amar Foundation which took shape on 1<sup>st</sup> of April 2013.

And today after years of concerted efforts and committed service we are happy to record the following statistics as on 31.03.2013:

No. of children in the Home	...	54
No. of children who attended the integrated school	...	881
No. of children who attended the Special School	...	65
No. of patients treated in the Medical Testing Unit	...	713
No. of services attended during the year	...	28,318
No. of districts covered	...	03
No. of villages adopted by the Sangam	...	approx. 800
No. of villagers benefitted through the Sangam	...	14,000+
No. of Self Help Groups formed	...	334
No. of persons receiving acute care for Spinal Injuries	...	11

We have raised our performance to prove to the people at large that disability is not a constraint but only a condition that is to be understood and lived with. The total number of persons with disabilities who have got direct rehabilitation since inception is 1951.

We continue to receive awards and recognitions for our distinguished services. We strive hard to get grants and contributions from individuals, NGOs, Trusts and Corporates both in India and abroad.

**S. Ramakrishnan**  
Founder President

**S. Sankara Raman**  
Honorary Secretary



Shri S. Ramakrishnan

**Amar Seva Sangam** was founded in Ayikudy in 1981 – the International Year for the Disabled, by **Shri S. Ramakrishnan** with only a few students. His ambition was to become a Naval Officer. He cleared many of the physical fitness tests at Bangalore; but unfortunately in the last round of the test he fell down and broke his spine. He became a quadriplegic and after intense treatment both at Bangalore and Pune (in defence hospitals) returned to Ayikudy. He decided to start a school for the Rehabilitation of the disabled children. He christened the Organization as Amar Seva Sangam as a respect to his Doctor/mentor Amarjit Singh Chahal. Bharat Ratna Late Shri C. Subramaniam was the first Chief Patron and Dr. M.S. Swaminathan is the current Patron-in-Chief while Shri N. Vaghul, Former Chairman of ICICI and Shri S.V. Mony Former Chairman of General Insurance Corporation of India are present patrons. What was started as a small school with few children has grown over the years and after thirty years today Amar Seva Sangam is a premier institution in the field of Disability Management in the country. The school which had only handful of children to start with in 1981 has now grown up as a good High School with 678 boys and girls, guided and taught by dedicated teachers. The Nursery School has a strength of 203 boys and girls - besides teachers and Ayas.

Smt. Sivasankari, the famous Tamil writer and Novelist, who made known almost to the whole world the good work done by Shri S. Ramakrishnan and her write-up in the famous and very widely circulated Tamil Weekly Magazine of “Ananda Vikatan” touched the hearts of millions of people in India and abroad who generously contributed in cash and kind to the growth of the organization appreciating the undaunted spirit of the disabled person, Shri Ramakrishnan in wheel chair, working for the cause of not only the disabled children but also for the downtrodden as a whole.

In 1992 **Shri S. Sankara Raman**, a practicing Chartered Accountant at Chennai, relinquished his lucrative practice and joined Shri S. Ramakrishnan and today he is the Chief Functionary of the Sangam. Both are visionaries with missionary zeal and have been meticulous in the planning and execution of various projects. They are aware that like corporate bodies, the Sangam should have perpetual life and have been working towards a tomorrow when, even in their absence, the good work started by them can go on continuously.



Shri S. Sankara Raman

Amar Seva Sangam believes that the disabled people can contribute to society and the impression that they are to be sympathized and pitied is a misconception. Amar Seva Sangam feels that if they are enabled and are given a level playing ground, they can be as productive as anybody else in society. The Sangam's ultimate aim is to empower the disabled and it is a process that will start from different entry level rehabilitation plans depending upon their age, socio economic background and the nature and extent of disability. Nobody will be kept in the campus for more than three to five years and they are discharged from direct rehabilitation intervention to integrate them with society and their family. Amar Seva Sangam believes that this area can become a valley where everyone is considered as human being and the disability is only a part of human diversity in nature's creation. Equality should prevail and humanity is the ultimate winner.

The impact of the organization's activities is far and wide. We have raised our performance to prove to the people at large that disability is not a constraint but only a condition that is to be understood and lived with. The total number of persons with disabilities who have got direct rehabilitation since the inception of Amar Seva Sangam is 1951.

The number of persons working in software industry in various metro cities is 12; the number of self employed is 397; the number of people pursuing higher studies is 153; the number of self advocating leaders in the community is 2022.

*Memoirs*

**Amar Seva Sangam**





Dr. S. Sumathi

Today we have a Home for the Disabled Children, a school for Special Children, an integrated High School for both the disabled and abled, a Medical Evaluation Unit for the Disabled, a centre for Spinal Injured persons, separate hostels for boys and girls, Vocational Training Centre for making Note Books, a Typing Centre, a Tailoring Centre, Toys making centre and an Advanced Computer Training Centre. ASSA believes that mere rehabilitation without proper education is empty. Hence we stress importance for formal education and it is in this context that we have opened a Special Study Centre of Indira Gandhi National Open University (IGNOU) and also of Alagappa University. **Dr. S. Sumathi**, who is a doctorate in commerce opted for voluntary retirement after 27 years of teaching experience to join Amar Seva Sangam in 2002 and from then onwards she is incharge of Vocational Training Activities and the IGNOU and Alagappa University study centres at the Sangam. She is also incharge of the hostels.

All these were possible only because of the support of kind-hearted people like you and support of the Corporates. With your continued support we are confident of realizing our dream of establishing “**The Valley for the Disabled**” as a Rehabilitation and Development Centre for the region and developing models for self-help initiatives by integrating the disabled individuals with the society for improved living conditions in the village.

#### OUR ADVANTAGES :

- ❖ The organization is founded and run by physically challenged persons.
- ❖ Built a good team and infrastructure.
- ❖ Delivering quality and value added services.
- ❖ Operating at local, regional and national spectrums.
- ❖ Professionally run organization.
- ❖ ISO 9001 – 2008 Certification.
- ❖ Credibility Alliance Certified for Transparency.
- ❖ The Secretary is an Ashoka Fellow.
- ❖ Several State, National and International awards.
- ❖ 30 acre campus.
- ❖ Latest technologies.

Our focus for 2013 - 14 is strenthening internal management process, building alliances with coporates and funding agencies for sustainability, segregating income generating activities and buildup on the synergy to develop rehabilitation courses.

We solicit the continued patronage from all our wellwishers.

# ANNUAL REPORT 2012-2013

Amar Seva Sangam has completed thirty years of rehabilitation services to the differently abled with diligence and earnestness after a humble start in 1981. It gives us immense pleasure to record our activities during the year 2012-13.

The untiring efforts of Amar Seva Sangam in the last thirty two years have been duly recognized by many not only in India but also abroad and today we can confidently claim that we are a leading institution in the field of Disability Management in the country.

## 1. The major highlights of the year are as under

### a) Jindal Prize :

Sitaram Jindal Foundation, New Delhi, award given to the Secretary at New Delhi on 03-12-2012 for exemplary service to mankind. Received by Dr. M.S. Swaminathan, patron-in-chief on behalf of the Secretary.



### b) Handicare International :

As in the past Handicare International, Canada, headed by Smt. Sulochana Krishnamoorthy was able to raise funds for us and also mobilize sponsors for our various causes. From a donation of Rs.6 lakhs in 1992 it has been gradually increasing year by year and during the year 2012-13 they have raised an amount of Rs.43.72 lakhs and contributed to ASSA. Till March end 2013 Handicare International had arranged a total contribution of Rs.283.10 lakhs to us. We wish to record here our grateful thanks to Handicare Intl. in general and to Smt. Sulochana Krishnamoorthy in particular for her untiring efforts to sponsor our cause. We shall be failing in our duty if we do not acknowledge and thank all donors who made contributions to Amar Seva Sangam through Handi Care International.

### c) Sabarikaatai Thedu Devotional CD release :

Our well wisher Shri G. Rajan Babu and his friends organized a function to release a CD of devotional Tamil songs on Lord Ayyappa at Chennai on 27th October 2012. The songs were sung by Singers Shri Unnimenon, Shri Manickavinayagam, Shri Mukesh and Ms. Saindhavi. Shri M.S. Swaminathan was the Chief Guest. Shri R.P. Krishnamachari and Orator Smt. Bharathi Baskar were Special Guests of the function. The programme was followed by Namasangeerthanam by Shri G. Rajan Babu and Friends.

### d) Awards and Recognitions :

1. **Dhuruva Award** was conferred on the Secretary by Sudesi magazine at Chennai on 09-11-2012.
2. **Lifetime achiever Award** conferred jointly by the Rotary Club of Esplanade and Dr. MGR Medical University on the Secretary at Chennai on 22-11-2012 – received jointly by Smt. Thailambal (Secretary's mother) and Miss Saraswathy of Secretary's office.
3. **B.J. Modi Foundation, Mumbai, Award given to Dr. S. Sumathi on 09-12-2012- award received by Shri A. Gopalakrishnan on behalf of Dr. S. Sumathi.**
4. **KRIA Rotary Metro Exemplary Award** given to Secretary at Chennai on 04-01-2013.



### e) Early Intervention Centre:

The Early Intervention Centre inside the Sangam was inaugurated in February 2013. The building was donated by Handicare International, Canada. Children upto the age of six are given rehabilitation. A total of 42 children are undergoing training at this Centre besides 59 getting rehabilitation services at their homes. The services are given by suitably qualified staff like physiotherapists, special educators & speech therapists. Apart from these, under the VBRI activities, services are also provided for the identified children as being done inside the Sangam.

### f) Helping hands

Many organizations and individuals in India have liberally contributed for the rehabilitation and training of the differently abled. Notable among them are Shri R.P. Krishnamachari of Tex Bio-sciences, Chennai, Shri U. Sekhar of Galaxy Surfactants, Mumbai, M/s.Sitaram Jindal Foundation, New Delhi, M/s.Axon Construction, Chennai, Smt.Padma & Lt.Gen.Dr.N.R.Krishnan Trust, Bangalore, M/s.Shree Holdings, Chennai,

M/s.Trio Trend Exports Pvt. Ltd., Kolkatta, M/s.Tractors and Farm Equipments Ltd., Chennai, Dr. R. Swaminathan, Chennai. There were many donors who liberally contributed for the welfare of Amar Seva Sangam.

All the above contributions have helped us to increase the number of beneficiaries by enhancing and strengthening our services to the differently abled and rural poor.

### g) Major Events

1. Get Together Program for the Spinal Injured persons held from 04.08.12 to 06.08.12.
2. Additional class rooms of Siva Saraswathi Vidyalaya, Amar Institute of Rehabilitation Science and Playground were inaugurated on 02.09.2012.
3. New Laboratory and class rooms of Sivasaraswathi Vidyalaya were inaugurated on 06.02.2013. Tailoring Training Centre was inaugurated on 27.03.2013.
4. Tailoring Training Centre was inaugurated on 27.03.2013



On 05.02.2013 The Early Intervention Centre was inaugurated.

## MAJOR EVENTS 2012 - 13



On 10.05.2012 his holiness Sankaracharya of Sringeri mutt visited the Sangam and laid foundation stones for Early Intervention Centre and New Tailoring Unit besides the foundation stone laying for the Amar Vinayagar Temple.



On 02.09.2012 the Vasudeo Ganesh Kulkarni Vidya Vardhini Sadan in Siva Saraswathi Vidhyalaya High School was inaugurated by Shri Mukund Kulkarni.





On 06.02.2013 a separate block for Additional Class Room and Laboratory was inaugurated by Smt. Vijila Sathyanand, Mayor of Tirunelveli



On 27.03.2013 The New Tailoring Centre sponsored by BrahMos was inaugurated by Dr. A. Sivathanupillai, CEO of BrahMos.



Sabarikaatai Thedu Devotional CD release



From 11.08.2012 to 13.08.2012 GCTians 72 conducted programme at Amar Seva Sangam



On 25.06.2012 Hon'ble Minister Smt. Gokula Indira, Minister of Tourism, Govt. of Tamilnadu, Mr. V.K. Jeyakodi, I.A.S, Mr. Rajesh Lakhoni, I.A.S, Smt. Umamaheswari, DRO Tirunelveli, RDO & Thasildar visited the Sangam.



On 09.08.2012 Sangam participated in the Saral Vizha Festival at Courtallam.



Play Ground was inaugurated by Smt. S. Meenakshi, Deputy Registrar of Companies, Chennai.



On 13.01.2013 Sangamam Special School Annual Day Programme was celebrated.

## h) Projects Completed in 2012-13

Capital Commitments	Project Cost	Funding	Date of completion
Compound Wall for Plot in Madurai Road	Project completed Rs.55 lakhs.	From ASSA funds	Completed on 10-01-2013
VTC Tailoring Training Shed	Project completed Rs.23.58 lakhs.	BrahMos Aerospace, New Delhi	Completed on 04-12-2012
Early Intervention Centre	Project completed Rs.33.00 lakhs	Handicare International, Canada & Volkart Foundation, Mumbai	Project Inaugurated on 05-02-2013



## Our Activities

### 2. Institution Based Rehabilitation

#### 2.1 Rehabilitation

##### 2.1.1. Home

Children from the age of five to twelve are provided with free shelter, food, clothing, transportation, medical aid and appliances in the Sangam's Nursery/High School or for higher education outside the campus. They are also given special coaching.

S. No	Stages	Cumulative upto 31-03-2011	2012-13	Total upto 31-03-2013
1	Residential Care Students	287	At the beginning of the year 57	344
1.2	Children promoted to Village Based Rehabilitation	189	During the year 11	200
1.3	New Entrants		13	
1.4	Discharged	98	5	103
			At the end of the year 54	

*Sl.No. 1.2 and 1.4 who have been transferred to 'Village Based Rehabilitation Programme' or discharged continue to receive extension support from the Sangam.*

##### 2.1.2. Sangamam School for Special Children (Day Care Centre)

“SANGAMAM” School for Special Children (Day Care Centre) was started in 1997 with only nine children. Handicare Intl., Canada - one of our major donors, raised funds for the construction and a full-fledged school was inaugurated in 2008. Special children who need individual and particular care are brought to the School by Sangam's vehicle. While at School, they are trained in daily living activities, behavioural science, self-care, learning capacity by familiarizing them with reading/writing and speech apart from vocational skills. Besides physiotherapy and additional health care requirements the children are also provided with free nutritious lunch, biscuits and milk.

“Special Needs” is an umbrella underneath which a staggering array of diagnoses can be wedged. Children with special needs may have mild learning disabilities or profound cognitive impairment; food allergies or terminal illness; developmental delays that catch up quickly or remain entrenched; occasional panic attacks or serious psychiatric problems. The designation

is useful for getting needed services, setting appropriate goals, and gaining understanding for a child and stressed family.



S. No.	Particulars	Strength as on 31-03-2012	2012-13
1.	Strength at the beginning	73	71
2.	New Admission	10	10
3.	Discharged	12	16
Total strength at the end		71	65

### 2.1.3. Orthotics Centre

The Orthotics Centre, functioning inside the Campus, manufactures, repairs and services calipers both for the inmates of the Sangam and for others who approach us for such help. The entire services rendered are free of cost.

S. No.	Particulars	Cumulative upto 31-03- 2012	2012-2013	Cumulative upto 31-03-2013
<b>Manufacturing</b>				
1.	PVC Calipers	735	87	822
2.	Alimco & Metal Calipers	136	-	136
3.	Crutches	401	19	420
4.	Shoes & Chappals	439	2	441
5.	Artificial Limbs	2	-	2
6.	Others	1773	191	1964
	<b>Total</b>	<b>3486</b>	<b>299</b>	<b>3785</b>
<b>Repairing</b>				
7.	PVC Calipers	3826	209	4035
8.	Alimco & Metal Calipers	2550	83	2633

### 2.1.4. Medical Evaluation Unit for Disabled (MTU)

The Medical Testing Unit was setup in 1998 with aid from the Government of Japan. As a nerve centre MTU is extensively used by the families of the challenged individuals. This very important unit is very popular and we have a separate section for new born babies who may need physiotherapy attention right from the early stages. The centre's approach is modern and uses items like soft mattresses, mirrors, specific play materials for the children apart from new rehabilitation techniques. All the facilities extended to the users are free of cost. The results are highly encouraging which is evident from the following table which shows the number of patients coming to the centre and the number of services attended by the centre. We have already started a separate Early Intervention Centre.

#### Services of Medical Evaluation Unit for Disabled - Year-wise

Year	No. of Patients	No. of Service attended
2010-2011	737	35237
2011-2012	736	30838
<b>2012-2013</b>	<b>713</b>	<b>28318</b>

### 2.1.5. Spinal Cord Injured Post-Acute Care Centre (KANCHI BLOCK)

The Spinal cord injured post-acute care centre was started in 2007. The patients are from all over India. The centre has become very popular and we have a long waiting list of nearly 100 people from different parts of India for admission in the centre.

Year	Total No. of Inmates at the beginning of the year	Discharged during the year	Total No. of Inmates at the end of the year
2010-2011	21	11	10
2011-2012	22	11	11
2012-2013	<b>21</b>	<b>10</b>	<b>11</b>

The total number of patient admitted, treated at Spinal Cord Injured Post-Acute Care Centre and discharge so far is 43.



## SUCCESS STORY

Mr. Rajaguru aged 27 years is a case of paraplegia. When he was doing Physical Education at MDT Hindu College, Tirunelveli he was involved in a bike accident and injured his neck. Initial medical treatment was given at Galaxy hospital, Tirunelveli. His mother is no more. Father is an aged man and he was under the care of his brother.

He was admitted in Amar Seva Sangam on 3.10.12. At the time of his admission he had weakness of the both hands, poor control of trunk. Severe tightness of both legs and fully dependent on others even for his natural call. After the intensive medical care, Nursing care and physiotherapy he recovered from his bad condition. We trained him in independent transfer activity and walking with caliper and also training was given in tricycle riding, Bike riding in our centre. He was also trained with intermittent clean catheterization and digital evacuation for his bladder and bowel management.

Vocationally he was trained in Home Appliances service and cell phone service in our vocational rehab centre.



### 2.1.6. HOSTEL

#### Hostel occupancy

Year	DYTS*	PAC**	Guardianship	On Job Training	Total
2010 - 11	30	3	4	3	40
2011 - 12	45	5	2	1	53
2012 - 13	39	2	2	-	43

\* Disabled Youth Trainee Students

\*\* Post Acute Care Centre

So for 30 students were discharged out of whom 16 have been employed and 3 students are pursuing higher education. The remaining 11 students are staying with their parents/guardians.

Statistics of discharged Disabled Youth Trainees is: male 5, female 5. Year after year, there is a decrease in the occupancy rate of the Hostel; this is due to the fact that a large number of hostel inmates gradually move out and proceed for regular jobs outside. The placements are encouraging.

### 2.1.7. SSA-IED (Sarva Shiksha Abiyan)

This is a Central Government scheme for the welfare of both normal as well as physically/mentally challenged people. Amar Seva Sangam, being a well established NGO in the field of disabled sector, has been entrusted with running this scheme. Under this scheme we have been allocated seven Blocks of Tirunelveli District.

#### 2.1.7.1 Distribution of Aids & Appliances through SSA-IED

S.No.	Aids & Appliances	Cumulative upto 31.03.2012	Cumulative upto 31.03.2013
1.	Walkers	87	87
2.	Ortho Appliances (Calipers, Crutches and	15	15
3.	Corrective Boots	17	17
4.	Spectacles	-	-
5.	CP Walker	11	11

6.	Tricycles / Wheelchairs	42	42
7.	Hearing Aids	51	51
8.	CP Chairs	41	41
9.	Magnifier	-	-
<b>Other Support Services</b>			
10.	National Identity Cards issued by District Rehabilitation Office, Tirunelveli.	548	548
11.	Scholarships to Special Children (below 8 <sup>th</sup> standard) issued through District Disabled Rehabilitation Office, Tirunelveli	1169	1169
12.	Maintenance grant for severely disabled children	389	389
<b>Service Deliveries</b>			
13.	Regular follow up for mainstream school children	5788	5788
14.	Day care centre for children with mental retardation – beneficiaries	200	200
15.	Resource room activities for Low vision, Hearing impairment, Locomotor impairment and children with mental retardation	826	826

### 2.1.8. Vazhikaattum Thittam (Formerly known as NPRPD)

This programme of the Government of India aims at ensuring all aids and appliances, scholarship, etc. donated by the Government reach the grass root levels. ASSA has been assigned six blocks which covers 6 WODAP and 126 WWDAP. The total number of beneficiaries under the various categories like grants, Tri-cycle and wheel chair, Niramaya Health Insurance, Hearing aids, bus and train passes, caliper and crutches, tailoring machines, etc. during the year 2012-13 was 2,177 as against 3,945 during the previous year.

Maintenance grants are provided through this scheme for Persons with Mental Retardation/ Cerebral Palsy.

### Service details / service users for the year 2012-13

#### District Differently Abled Welfare Scheme Beneficiaries List

S. No.	Name of the Union	Alangulam	Kadayam	Keelapavoor	Kadayanallur	Shencottai	Tenkasi	Total
1.	Maintenance Grant	212	203	351	156	263	286	1471
2.	New Disability ID card	69	72	156	102	98	183	680
3.	Welfare Board Registration	681	728	937	825	675	563	4409
4.	Marriage Grant	7	14	15	2	22	15	75
5.	Tailoring Machine	9	14	26	3		5	57
6.	Education Scholarship	69	26	99	54	32	49	329
7.	Bus Pass	28	18	201	89	16	21	373
8.	Train Pass	32	60	83	85	22	22	304
9.	Motorized Vehicle	0	1	2	1	0	2	6
10.	Medical Camp	4	4	4	4	4	4	24
11.	OAP (Old Age Pension)	45	16	310	100	175	196	842
12.	Bank Loan	0	1	15	0	1	2	19
	<b>Total</b>							<b>8589</b>



### 2.1.9. Pudhu Vazhvu Thittam (formerly known as Vazhnthu Kattuvom Thittam)

Amar Seva Sangam continues to be the Block Disability Facilitating Agency for this project which is run by the Government of Tamilnadu with the assistance of the World Bank. This project was promoted with a view to reduce poverty of the very poor, disabled and vulnerable people and tribal communities. The objective of this project is to reduce rural poverty by focusing on the poorest of the poor through sustainable support for productive activities and investments, using the community-driven development approach.

Amar Seva Sangam was selected as the implementing agency in view of the vast experience it had gained in upliftment of the physically challenged and vulnerable people from all walks of life both urban and rural besides extensive exposure in Village Based Rehabilitation programmes. Three Blocks of Tirunelveli District have been assigned and we are applying the cluster approach for successful results.

The total number of beneficiaries under the various schemes for the year 2012-13 was 4517.

#### Statistics for the year 2012 – 13

S. No	Services rendered	Physically challenged beneficiaries	Vulnerable beneficiaries	Total beneficiaries	12-13 beneficiaries
1	Assessment Camp	3735	2530	6265	4730
2	National ID cards	3602	-	3602	2180
3	BDFA Cards	385	-	385	0
4	Aids and appliances	697	-	697	214
5	Self-help groups for the disabled	328	0	328	1815
6	Beneficiaries identified	3768	2530	6298	4730
7	Vocational skill training	960	515	1475	50
8	Individual assistance for livelihoods	2935	1899	4834	810
9	Economic activity groups	28	0	28	0
10	Old age Pension	1389	540	1929	136
11	Niramaya health insurance	637	-	637	41
12	Maintenance grant	491	-	491	30
13	Community Disability Facilitator (CDF)	72	-	72	139
14	Seed money	328	-	328	15
15	Revolving Fund	325	-	325	0
16	Home Based Physiotherapy follow up	689	-	689	689
17	CDF MRT Training	3	-	3	2
18	Respite Centre formation	4	-	4	0
19	PHP- Pension	1010	-	1010	61
20	one year group auditing	25	-	25	0
21	Surgery	31	-	31	2
22	Plantation of siblings	3768	-	3768	0
23	No of camps conducted	44	-	44	15

### 2.1.10. Rehabilitation Centre

Under the guidance of the Institution Based Rehabilitation activities various community support services were offered as mentioned below:

S. No.	Particulars	Cumulative up to 31.03. 2012	2012 - 2013	Cumulative upto 31.03.2013
1	Identity Cards issued	11126	473	11599
2	Scholarship to disabled students	1406	115	1521
3	Free bus-pass facility	716	86	802
4	Train concession pass facility	460	38	498
5	Persons who got (MR) maintenance grant	2302	376	2678
6	Students who received vocational training	660	47	707
7	Students who received artificial limbs	118	24	142
8	No. of persons who received FFE scholarship	76	11	87
9	Tri-cycles & wheel chairs issued	993	14	1007
10	Persons who got BANK LOAN with subsidy	59	13	72
11	Persons who participated in State, District level Sports	415	43	458
12	Camps conducted (Polio, C.P & M.R, Eye camps)	40	4	44
13	Calipers and crutches and other items issued	2268	299	2567
14	Disabled who got free Note – Books	892	0	892
15	Disabled Who received School fees	282	49	331
16	Patients who attended the polio and other camps	2250	172	2422
17	Surgeries done	92	10	102
18	Persons who received medicines and tablets	215	8	223
19	Persons who received Physiotherapy	3981	774	4755
20	Persons treated at Govt. Hospital, Tirunelveli	43	9	52
21	Tuition students	87	17	104
22	Persons given counseling	967	153	1120
23	Disabled children who received prizes in sports	559	36	595
24	Disabled who received School Uniforms	273	49	322
25	Tricycles/Wheelchairs Maintenance	796	156	952
26	Job placement given	175	206	381
<b>Total</b>		<b>31251</b>	<b>3182</b>	<b>34433</b>



## 2.2. Vocational Trainings

Amar Seva Sangam, apart from rehabilitation activities also provides Vocational Training in Tailoring, Toy making, note-book binding, Typewriting and advanced Computer training for the disabled youths. Many trained youths have been selected by leading software and other manufacturing organizations and are getting good salaries.

### 2.2.1. Tailoring / Toys / Paintings, etc.

The Tailoring section was started in 1999 with only four physically challenged students. Till 2006 this section was only a tailoring training centre. There has been a considerable increase in the flow of orders for uniforms from schools / organizations in the last few years. During the year 2012-13 this section fetched about Rs. 38.09 lakhs for uniforms supplied as compared to Rs.23.04 lakhs during 2010-11. As a result of intensive training given to both normal and physically challenged, 10 physically challenged persons have now become full fledged tailors. Apart from the requirement of Sangam's uniforms, this section stitches and supplies uniforms to many schools and organizations. Last year many new organizations have covered their requirement of uniforms from this section. Because of our quality workmanship and prompt delivery we are sure that we shall get substantial order during the current year.



The handicraft centre makes toys, artificial jewellery, painting on fabrics, ceramics, sarees, glasses, stoneware and other items. The centre is always upgrading its quality, bringing out innovative designs which are always in good demand. During the year the staff have also been trained in textile printing with a view to procure orders for the growth of this centre.

This centre also prepares all the mementos the Sangam presents to various visitors besides taking orders of the visitors who are impressed by our work.

#### Details of trainees

S. No.	Particulars	Cumulative up to 31.03.2012		2012 – 13		Cumulative up to 31.03.2013 (PC & NPC)
		Physically Challenged Students	Non Physically Challenged Students	Physically Challenged Students	Non Physically Challenged Students	
1.	Tailoring	211	349	4	53	617
2.	Handwork	232	43	10	-	285



### 2.2.2. Note Book Making

Due to our effective canvassing we were able to break new grounds and received substantial orders from V.V. Minerals, Tisayanvilai and Vivekananda Vidyalaya, Chennai during the year. These orders have been successfully executed to the entire satisfaction of our new clients.

S.No	Particulars	Cumulative Figure up to 31.03.2012	2012-13	Cumulative Figure up to 31.03.2013
1.	No. of note books manufactured	2097067	87970	2185037
2.	No of Books bound	26995	2400	29395
3.	No of Students Trained	20	3	23

### 2.2.3. Wheelchair/Tricycle Section

Due to very effective and efficient in-house work carried out by the section a **saving of nearly Rs.3070 was achieved.**

S. No	Section	Apr. 2012 (Rs.)	May-2012 (Rs.)	Jun. 2012 (Rs.)	Jul. 2012 (Rs.)	Aug. 2012 (Rs.)	Sep. 2012 (Rs.)	Oct. 2012 (Rs.)	Nov. 2012 (Rs.)	Dec. 2012 (Rs.)	Jan. 2013 (Rs.)	Feb. 2013 (Rs.)	Mar. 2013 (Rs.)	Total (Rs.)
1.	RHC	128	63	70	312	142	272	138	66	0	190	85	46	1512
2.	Hostel	374	124	38	103	121	54	76	105	23	77	95	32	1222
3.	Home	213	157	211	44	121	86	73	32	123	0	0	157	1217
4.	Office	0	68	37	0	0	69	50	0	39	127	0	60	450
8.	Spastic (SSSC)	165	0	110	0	0	0	215	26	0	0	0	0	516
Total Income		880	412	466	459	384	481	552	229	185	394	180	295	4917

### 2.2.4. Typewriting Centre

Subject	August – 2012						February - 2013					
	No. of Students Appeared for exam		Passed out students		Strength of students studying		No. of Students Appeared for exam		Passed out students		Strength of students studying	
	PC	N	PC	N	PC	N	PC	N	PC	N	PC	N
Junior Grade	3	1	3	0	10	7	1	0	0	0	13	17
Senior Grade	2	1	0	0	2	1	3	4	2	4	4	3
Total	5	2	3	0	12	8	4	4	2	4	17	20



The Tamilnadu Government conducts the above examinations twice a year - August and February. Recently the Government of Tamilnadu had made it obligatory that passing the senior grade typing examination is necessary for data entry jobs both in Government and private sectors. Due to this ordinance many data entry aspirants nowadays join the senior grade typing classes.

### 2.2.5. Computer / Information Technology

During 2012-13 the strength in all the courses was satisfactory. Due to the fact that advanced hardware is available and because of effective marketing efforts the strength has increased during 2012-13. Experienced staff are taking classes for the various courses. As usual the physically challenged students continued to receive free computer training.

The following table shows the various courses offered and students enrolled for the new courses during the year.



S. No.	Particulars	Cumulative from 2008 to 2012	2012-13	Cumulative up to 31 <sup>st</sup> March 2013
1.	MICRO SOFT OFFICE	118	37	155
2.	DESK TOP PUBLISHING	49	6	55
3.	TALLY	6	14	20
4.	DCA/DBA	6	0	6
5.	PGDCA	19	0	19
6.	One month courses	0	3	3
7.	SUMMER COURSES	196	41	237
8.	CCA (6 months)	0	1	1
9.	CCA (1 Year)	0	1	1
	<b>Total</b>	<b>394</b>	<b>103</b>	<b>497</b>

## 2.3. Education

### 2.3.1. Nursery & High Schools

The nursery school setup in 1981 and upgraded to middle school in 1991 was elevated to the status of a high school in 2009 and the second batch of 10<sup>th</sup> standard students appeared for the public SSLC exam. in March 2012. We are pleased to record here that we were able to produce again cent percent success.

#### Siva Saraswathi Vidyalaya Nursery School

S. No.	Particulars	2011- 2012	2012-13
1.	Strength at the beginning	212	201
2.	New Admission	122	123
3.	With Drawls	133	121
	<b>Total strength at the end</b>	<b>201</b>	<b>203</b>

#### Siva Saraswathi Vidyalaya Middle and High School

S. No.	Particulars	2011- 2012	2012-13
1.	Strength at the beginning	612	654
2.	New Admission	107	113
3.	With Drawls	65	89
	<b>Total strength at the end</b>	<b>654</b>	<b>678</b>

#### Physically Challenged Students Strength out of the above

S.No.	Particulars	2011-12	2012-13
1.	High School	69	66
2.	Nursery School	6	5
	<b>Total</b>	<b>75</b>	<b>71</b>



### S.S.L.C. Exam. School Toppers



**T. Thirumalai  
Murugeswari**  
School 1<sup>st</sup> 474/500



**N. Sivakami**  
School 2<sup>nd</sup> 471/500



**A. Gowsalya**  
School 3<sup>rd</sup> 470/500



**Hydar Akbar S Ali**  
425/500 School First  
Amongst Disabled

### 2.3.2. Sivasankari Public Library

S.No.	Particulars	2011 - 12	2012 - 13
1.	Books in the library	1034	1034
2.	Membership	27	10
3.	No. of persons utilized our library	3800	1200

The membership has not improved. This may probably be due to the fact that most of the members are availing net services. But the number of persons who utilized our library has come down much. Only 32% of the total persons who utilized our library in 2011-12, continued to take advantage of our library during the year 2012-13.

### 2.3.3. Indira Gandhi National Open University Special Study Centre

The IGNOU Special Study Centre started in the year 2000 continues to attract many students. This is evident from the fact that 56 students completed their studies in 2012-13 as against 16 last year. The number of students on rolls as on 31-03-2012 was 93.

#### Students Strength 2011-2012

S. No.	Particulars	Cumulative from 2008 to 2012	2012-13	Cumulative upto 31.03.2013
1.	BA	8	9	17
2.	BCA	88	11	99
3.	B.Com, BSW	142	15	157
4.	BPP	26	12	38
5.	CNM	7	1	8
6.	CFN, CFE	4	1	5
7.	CTE, CTS	4	2	6
8.	DNHE	2	1	3
9.	MAEDS	1	0	1
10.	MCA	217	17	234
11.	M.COM	5	6	11
12.	MEG, MHD	2	3	5
	<b>Total</b>	<b>506</b>	<b>78</b>	<b>584</b>

### 2.3.4. Alagappa University Study Centre

The enrolment position for the year 2011 – 12 is given below.

The second batch of 51\* students completed their studies during 2011 – 12. The number of students on rolls as on 31-03-2012 was 68

S. No.	Particulars	Cumulative from 2008 to 2012	2012-13	Cumulative Total up to 31.03.2013
1.	B.Com	32	13	45
2.	BA	42	21	63
3.	BSC	12	13	25
4.	BBA	24	10	34
5.	BCA	12	9	21
6.	MBA	30	12	42
7.	MA	13	5	18
8.	M.COM	4	4	8
9.	MCA	3	0	3
10.	MSc	2	3	5
11.	B.LITT (Tamil)	0	8	8
12.	CLISC	0	4	4
13.	BLISC	0	1	1
	<b>Total</b>	<b>174</b>	<b>103</b>	<b>277</b>

\*This includes students who joined before 2009.

### 2.3.5. Education for Empowerment

As part of our educational initiatives we have

1. Special Study Centre for IGNOU and Alagappa University for distance education.
2. Tie up with Rehabilitation Council of India for the rehabilitation courses.

**The purpose of the above programmes are:**

- To educationally empower the persons with disabilities in an integrated environment.
- To offer skill development opportunities.
- To identify and develop persons with entrepreneurial aptitudes and social orientations with capacity building inputs.
- To build capacities in persons already engaged in social sectors and to bring out educated and empowered people – both disabled and non-disabled for the benefit of society.

#### 1.3.5.1 Amar Institute of Rehabilitation Science:

The needs for Rehabilitation programmes was keenly felt by ASSA and have since established this Institute (Approved by Rehabilitation Council of India, New Delhi), under the aegis of which, we are conducting the following rehabilitation programmes, aimed at developing skilled personnel to work at the community level. After completing the courses, young men and women can start rehabilitation services, especially in the rural, tribal areas and also in urban impoverished areas. Furthermore, this service oriented theoretical and practical oriented programmes will provide career opportunities to the needy persons. The courses offered are:

1. DECSE (MR) - Diploma in Early Childhood Special Education (MR)
2. DCBR - Diploma in Community Based Rehabilitation
3. CCCG - Certificate Course in Care giving

S.No.	Regular Courses	New Admission 2012-13		
		PC	NPC	Total
1.	Diploma in Early Childhood Spl. Education (MR)	Nil	11	11
2.	Diploma in Community Based Rehabilitation	1	2	3
3.	Certificate course in Care giving	Nil	2	2
<b>Total</b>		<b>1</b>	<b>15</b>	<b>16</b>

### 3. Village Based Rehabilitation Initiatives (VBRI)

Under our community based rehabilitation programmes we involve Persons with Disabilities and the community in the rehabilitation process and develop a model whereby they own the responsibilities of rehabilitation, economic development and care giving and take forward the initiatives of the facilitating organization. Vibrant and proactive disabled groups have been developed and parents associations have been formed. As on date seven Respite Centres have been formed for lifelong care giving for the severely and permanently disabled persons. As on 31-03-2013 there were 334 Self Help Groups. Under our VBRI we cater to the needs of nearly 14,000 disabled in 9 blocks of Tirunelveli Dist. covering nearly 800 villages with a population of about 17 lakhs. The main objectives of the community based rehabilitation services are:

- Sensitizing the community, families and persons with disabilities about disabilities.
- Promoting the Self Help Groups for development and forming Federations – wider level networking.
- Organizing People with Disabilities into Self Help Groups.
- Initiating comprehensive rehabilitation measures.
- Enabling the PWDs to access various government schemes.
- Promoting advocacy work and campaigning for the protection of rights and equal opportunities for PWDs.
- Strengthening the human resource for the effective implementation of the process.

The entire activity is managed through periodical co-ordination meetings, planning, budgeting and internally developed reporting systems. Key indicators are developed for impact and activity levels are monitored through a system of computerized managerial information. Databases have been created for various rehabilitation programmes and individualized rehabilitation programmes are followed up by the central resource personnel of Amar Seva Sangam and course corrections done wherever required.



### 3.1 Various indicators of Village Based Rehabilitation (VBR) Programme

S.No	Key Indicators	Methodology	Upto 31.03.2012		Upto 31.03.2013	
<b>Key Indicator for Group</b>						
1	Membership	No.of Members in SHGs/ No.of Face Sheets	3378/8923	37%	3496/8970	38.5%
2	Members in SHGs	No.of Members/ No. of SHGs	3378/334	10.1 AVG	3496/334	10.3 AVG
3	Meetings	No.of Meetings/ No. of SHGs	5943/334	17.7 AVG	8540/334	25.5 AVG
4	Attendance	Total Attendance/ No.of Members	2955/3378	87%	3125/3496	87%
5	Leadership in Groups	No.of Leaders/ No.of SHGs	1002/334	3 AVG	1002/334	3 AVG
6	Leaders in Members	No.of leaders/ No. of Members	1002/3378	29.6%	1002/3496	29.9%
<b>Key Indicators for Women Participation</b>						
7	Women Membership	No.of Women members/ No.of members	1148/3378	34%	1135/3496	32%
8	Women members in Leadership	No.of Women Leaders/ No.of Leaders	428/1002	43%	439/1002	44%
9	Women Presidents in SHGs	No.of SHGs where Women are president/ Total No.of SHGs	141/334	42.2%	135/334	40%
<b>Key Indicators for Education</b>						
10	Literacy status among children	No.of illiterate children / No.of children age 6 – 18 Years	218/902	24.1%	232/963	23%
11	Literacy status among PDs	No.of illiterate PCs / No.of Face Sheet age 6 and above	3131/8923	35%	3123/8970	35%
<b>Economic Indicators</b>						
12	Savings and Credits among SHGs	No.of SHGs in credits and savings/ Total No.of SHGs	285/334	85%	298/334	89%
13	Bank Linkages	No.of SHGs with Bank Account/Total No.of SHGs	175/334	52%	203/334	61%
14	Total money Saved	Total Amount of Money Saved	Rs.3,205,801	-	Rs.3,978,950	-
15	Loans availed	Total Amount of Internal Loan Outstanding	Rs.1,353,137	-	Rs.2,032,567	-

16	Money rotation (It should be closer to 100%)	Total Amount of Loan Outstanding / total amount of money saved and bank loan	Federation Managed	Internal	808,987/1,217,975	66.42%	1,131,947/1,368,750	82.69%
				MF	400,000/400,000	100%	1,000,000/1,000,000	100%
			Group Managed	Internal	544,150/1,987,826	27.37%	900,620/2,610,200	34%
17	Long overdue loans (preferably should be less than 25%)	Loan Outstanding Which is more than 3 months old (Excluding business loan) / Total amount of loan outstanding	Federation Managed	Internal	525,400/808,987	64.94%	387,250/996,880	38.85 %
				MF	Nil		Nil	
			Group Managed	Internal	325,600/544,150	59.83%	472,550/793,647	59.54 %
18	Savings per membership	Total amount of savings / Total No. of members	Federation		12,17,975,875	1391 Avg.	13,68,750,881	1553 Avg.
			Extension		19,87,826,2563	775 Avg.	26,10,200,2589	1008 Avg.

Activities Report				
S.No	Field Activities	2011-12	2012 -13	Cumulative Up to 31.03.2013
<b>Awareness</b>				
1	No. of Awareness Materials Developed	12	-	76
2	No. of Awareness Programmes Conducted	312	320	1574
3	Disabled Participatory Programme	0	-	47
<b>Training</b>				
4	Leadership Training - First Level	0	4	17
5	Leadership Training - Second Level	0	4	25
6	Leadership Training - Advanced Level	0	4	27
7	Parents Training - First Level	0	15	90
8	Parents Training - Second Level	0	14	74
9	Parents Training -Advanced Level	68	14	193
<b>Mobilizing the physically Challenged persons</b>				
10	Face sheet	41	47	8970
11	OP Card	240	74	2296
12	Community Analysis	25	13	320
13	Case Studies	511	798	3332
14	No. of Parents Association formed	0	2	9
15	No. of members in Parents Association	0	28	110
16	No. of Respite Center formed	0	2	9
17	No. of Children in Respite Center	0	28	110
18	Individual Counseling	6983	8619	61727

19	Family Counseling	3826	4153	33270
<b>Service Delivery</b>				
20	Appliances Identified	25	150	700
21	Appliances Issued	20	149	683
22	District Disabled Rehabilitation Office Schemes - Beneficiaries Identified	1000	9000	38000
23	District Disabled Rehabilitation Schemes - Benefits Achieved	1000	8589	36400
24	Persons Rehabilitated by CRWs	273	248	1156
25	Surgeries done	4	-	40
26	No. of Persons attended in Doctor Camps	15	0	114
27	No. of persons who received medicine and tablets	83	20	364
28	No. of persons who received physiotherapy	117	86	573
29	Marriage Grant	67	35	222
30	No. of Appliances Repaired	33	42	768
31	Providing Hearing Aids	12	-	241
32	Integrated / Inclusive Education in Primary Schools	69	16	143
33	Special Material	-	-	25
34	No. of Children introduced for early stimulation activities	25	9	74
35	Activities of Daily Livings skills (ADLs) Development (Discharge of persons with Disabilities from CRW Therapy Care)	7	25	103
36	Persons With Disabilities Discharged for non co-operation	35	12	51
37	Development of productive skills		-	65
38	Screening camp for new born camp	64	33	228
39	No of New born Screened	750	495	3420
40	No of Newborn Baby Identified	5	3	51
41	Resolving Issue	3	4	34
<b>Economic Development</b>				
42	No. of job placement given	25	31	181
43	Income Generation Support	55	89	345



### 3.2 Disabilities Data for five Blocks viz Tenkasi, Kadayanallur, Kizhapavoor, Shencottai & Alankulam (Accumulated figures for 2010-11 and 2011-2012 given)

S. No	Type of Disabilities	2011-2012 New Identification of PWD			2012-2013 New Identification of PWD			Cumulative till 31.03.2013	%
		M	F	Total	M	F	Total		
1	Cerebral palsy / Mentally Retarded (CP & MR)	13	8	21	16	20	36	2535	28%
2	Locomotor (LD)	7	5	12	4	3	07	4198	46.97%
3	Hearing Impairment (HI)	11	7	18	0	0	0	842	9.44%
4	Visual Impairment (VI)	2	4	6	0	0	0	667	7.48%
5	Other Disabilities (OD)	25	17	42	1	3	4	728	8.11%
<b>Total</b>		<b>58</b>	<b>41</b>	<b>99</b>	<b>21</b>	<b>26</b>	<b>47</b>	<b>8970</b>	<b>100%</b>

### 3.3 People with Mental Illness (MI) Programme

Our Mentally and Physically challenged persons are sent to Government Hospital, Tirunelveli once or twice a month for checkup and required medication. We thankfully acknowledge the services rendered by Vidya Sagar, Chennai and also look forward for their continued support. We give below the figures for 2012-13.

MI Programme	Male	Female	Total
MI patients Identification	209	144	353
MI patients follow up	122	73	195

## 4. Managerial Information Systems

### 4.1 Managerial Information Systems (MIS) / Hardware Solutions:

Managerial Information System (MIS) aims at providing information that Sangam requires to manage various sections and activities efficiently and effectively. Computer systems are used for managing six primary components: 1) Hardware, 2) Software, 3) Data Base, 4) Systems and Procedures (design, development and documentation), 5) Section activities and 6) Website management. Management information system in Amar Seva Sangam is an ERP prepared by our own people and used to analyze and facilitate strategic and operational activities.

The main areas covered are:

- Accounting
- Tracking of individual Rehabilitation Plans of more than 8000 persons with disabilities in the 800 villages served by the Sangam.
- Census and Survey Data Base of the Disabled Persons
- OP system for Medical Testing Unit
- Donor Base Management
- Sponsorship Management
- Inward and Outward
- Vehicles Movements
- Inventories
- Gate Pass and Security
- Time Keeping and Payroll
- Project Management
- Repairs and Maintenance

At present the MIS produces reliable, timely and relevant accounting data and reports on real time basis. For example, the average lead time for receipt despatches for the donors from the time donations are received has reduced to 4.06 days from 5.25 days last year.

The future outlook of MIS are aimed at,

- ▶ Producing fixed, regularly scheduled reports.
- ▶ Executive Information Systems (EIS) that provides quick access to summarized reports coming from all sections and departments such as accounting, human resources and others as mentioned above.

Office Automation Systems (OAS).

#### 4.2 Data Base Management (DBMS)

Amar Seva Sangam Data Base Management aims at supporting data structures, databases to operate large quantities of information by inputting, storing, retrieving and managing that information. Databases are set up so that the ERP provides the concerned users with access to relevant data. DBMS is responsible for maintaining the integrity and security of stored data, and for reporting classified information for MIS purposes.

Database management systems (DBMSs) are specially designed to interact with the user to capture and analyze data through creation, querying, update, and administration of databases.

The interactions catered to are:

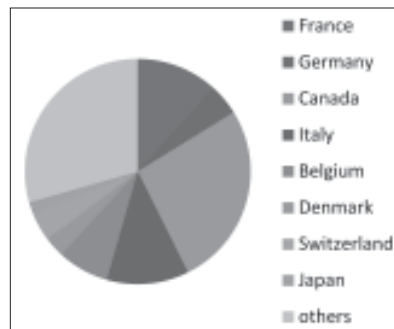
- ▶ Data definition. Defining new data structures for a database, removing data structures from the database, modifying the structure of existing data.
- ▶ Update. Inserting, modifying and deleting data.
- ▶ Retrieval. Obtaining information either for end-user queries and reports or for processing by applications.
- ▶ Administration. Registering and monitoring users, enforcing data security, monitoring performance, maintaining data integrity and dealing with concurrency controls.

Different types of data connected with various activities are regularly stored by the DBMS Section of Amar Seva Sangam. The data stored at DBMS of Amar Seva Sangam are Gate Pass entry, Vehicle Pass entry, Out Patients details entry, Face Sheet Entry, Purchase Order Entry, Goods Received Note Entry, etc. These are done on a routine basis and the stored data are kept safely; any data can be presented on request or when required. Monthly reports are generated, for example vehicle report, food report, etc. for various purposes.

### 5. Exchange Programmes

#### 5.1 Visits by Overseas and Indian Students:

Messrs. Teaching Abroad continued to depute through their contacts abroad general public and students to visit us with the aim of extending voluntary help and at the same time gain valuable experience, knowledge about us besides also understanding Indian culture. They are one of the sources through which ASSA's image is projected abroad. During the year a total of 68 Volunteers from Australia, Belgium, Canada, Denmark, England, France, Germany, Italy and Japan came to the Sangam and helped the Home Children.



## 6. Networking of NGO

1. M/s. Add India, Bangalore fully support us in imparting training, exposure visits, etc. to all the staff and members who are associated with and work for the Village Based Rehabilitation activities.
2. M/s. Vidyasagar, Chennai are the main benefactors in providing all help to the mentally challenged/ ill persons who approach the Sangam.
3. M/s. Krishna Yoga Mandiram, Chennai continue to impart YOGA lessons/techniques to special children, physically challenged Home children and youth trainees.
4. Dr. R. Sundar, Managing Trustee of Freedom Trust who is also the visiting doctor from Chennai to our Sangam continues to extend all help to our Sangam by donating wheelchairs, Tricycle and other appliances to the needy who are covered under our various rehabilitation schemes.
5. Gandhigram Trust, Dindigul, is a conglomeration of several benevolent and service units which extends their help and cooperation to us in many ways for our betterment. They hold meeting with us, organize visits and give valuable inputs which have all helped us to carry out our service in a more satisfying and rewarding manner.
6. All our efforts and pride moments have been possible only due to the continued and unflinching support and blessings of well wishers, donors, institutions and staff who have always been with Amar Seva Sangam during good as well as difficult times. We continue to look forward to the support of one and all.

## 7. Human Resource Development

### 7.1 HR Policies

Amar Seva Sangam believes in employing physically challenged to the maximum extent possible. That is why we provide ample opportunities to the physically challenged trainees who show keen interest, devotion, commitment and dedication in our endeavour to absorb them as staff of the Sangam. 20% of our staff are differently abled.

The following areas are governed by HR Policies:

- |                         |   |
|-------------------------|---|
| ● Organizational Chart  | ● Personnel administration                |
| ● Recruitment           | ● Transfer and Promotion                  |
| ● Pay fixation          | ● Separation                              |
| ● Induction             | ● Social Security                         |
| ● Performance appraisal | ● Awards                                  |
| ● Leave rules           | ● Reimbursements                          |
| ● Training              | ● Safety, Housekeeping and Administration |

The pay structure is at three levels.

1. At entry level
2. At associate level
3. At senior level (above 5 years or Section/ Department Heads)

At entry level the pay is calibrated for a period of 24 months of recruitment with basic component and accelerated pay increase depending on the progress and learning of the employee.

After entry level the employee will be drafted as “Associate” from where the regular pay will be fixed and increments given annually.



The senior level will be based on the qualitative and competency aspects which will be appraised on a regular basis.

The Annual increment has three components

1. A guaranteed component
2. Capacity development based incentive
3. Incentive based on performance

### 7.1.1 Staff Composition

Entry Level		Associate Level		Senior Level				Total	
				Section/ Department Heads		Others			
PC	Others	PC	Others	PC	Others	PC	Others	PC	Others
7	54	21	54	1	12	14	47	43	167

Particulars	Male		Female		Total
	PC	NPC	PC	NPC	
No. of staff as on 01.04.12	28	67	20	74	189
No. of staff newly recruited	0	18	1	22	41
No. of staff Honorarium staff	0	3	0	0	3
Total	28	88	21	96	233
No. of staff who left the organization	4	8	2	9	23
Total as on 31-3-2013	24	80	19	87	210

### 7.1.2 TRAINING AND DEVELOPMENT

S.No	Details	Responsibility & Authority.
1	Determination of competence requirement	Secretary & Concerned Dept. / Sec. Heads
2	Identifying Training Needs	Dept. / Section Heads
3	Preparation of Training Plan, Organizing Training	Section Head-HR
4	Evaluating the Effectiveness of Training	Dept./Section Heads and HR

### 7.1.3 Personnel Administration

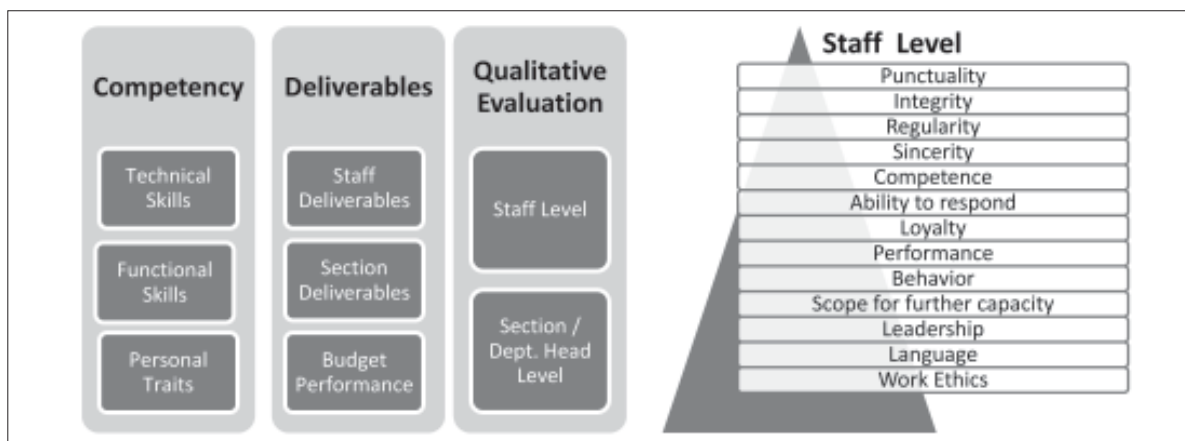
#### Internal Staff Meetings:

- ❖ Section Meetings : 302
- ❖ Section Heads and Dept. Head meetings : 18
- ❖ Central Team meetings : 25
- ❖ All staff meetings : 0
- ❖ Monthly VBRI all staff meetings : 13
- ❖ VBRI Team Leaders meetings : 2
- ❖ ISO Meetings : 4

#### 7.1.4 Social Security

- ❖ PROVIDENT FUND (PF)
- ❖ GRATUTITY
- ❖ GSLI
- ❖ ESI
- ❖ GROUP INSURANCE

#### 7.1.5 Performance Appraisal



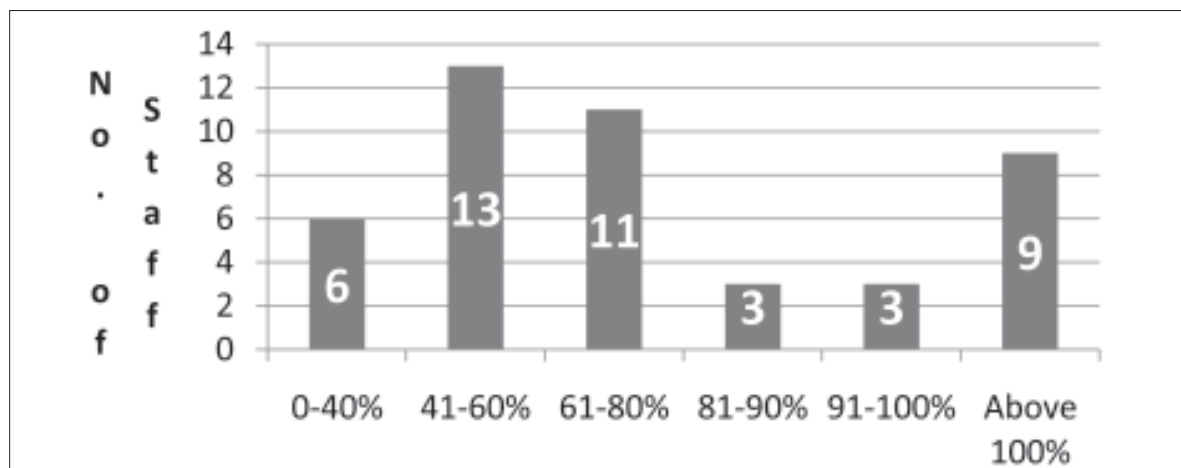
#### 7.2 Training / Workshop Programmes for Personnel

We believe that training, both in-house and outside, enhance the knowledge and sharpness skills of the staff. Hence we arrange training / workshop both inside the campus and outside. Some such programmes are given below.

- 1) ISO Internal Audit Training attended by 23 staff members inside the campus on 1-4-2012 and 2-4-2012.
- 2) Performance appraisal training attended by 20 staff members inside the campus on 19-04-2012.
- 3) Marketing skill training attended by 10 staff members inside the campus on 29-4-2012.
- 4) Comprehensive Management of Spinal Cord Injury training attended by Mr. P. Ramasubramanian and Mr. R. Shyam Sundar at New Delhi from 27-4-2012 to 29-4-2012.
- 5) Communication skill training attended by 23 staff members inside the campus on 11-6-2012 and 12-6-2012.
- 6) Creative thinking training attended by 19 staff members inside the campus on 12-6-2012.
- 7) Winning Habits training attended by 21 staff members inside the campus on 14-6-2012.
- 8) Supervisory skill training attended by 34 staff members inside the campus on 22-6-2012 and 23-6-2012.
- 9) ASSA Rules and Regulation training attended by 31 staff members inside the campus on 27-8-2012.
- 10) Inclusive Education pre-maths & pre-reading training attended by 33 staff members inside the campus on 01-09-2012.
- 11) School of NGO Management training attended by Mr. C. Pattukumar, Mr. S. Paramasivan and Mr. S. Sudalaimuthu at Theni on 3-9-2012.

- 12) Time Management training attended by 48 staff members inside the campus on 07-09-2012.
- 13) Neuro Developmental Treatment for handling method training attended by Mrs. N. Subbulakshmi at Madurai from 27-9-2012 to 6-10-2012.
- 14) Integrated Therapy in early intervention workshop attended by 6 staff members at Chennai from 21-11-2012 to 24-11-2012.
- 15) Multiple Disability Autism (CRE Programme) training attended by Mr. P. Thirunavukarasu and Mr. V. Lakshmanan at Chennai from 26-11-2012 to 28-11-2012.
- 16) Rights of Disability Act training attended by 31 staff members inside the campus on 25-12-2012 and 26-12-2012.
- 17) Staff Motivation and Attitude Development training attended by 20 staff members inside the campus on 19-01-2013.
- 18) ADL & Curriculum modification training attended by 7 staff members inside the campus on 22-2-2013.
- 19) CBR Training and Social Analysis training attended by 24 staff members inside the campus from 21-3-2013 to 23-3-2013.

#### 7.2.1 Staff performance chart



## 8. Donations and Fundraising programmes

### 8.1 Handi-care Intl., Canada

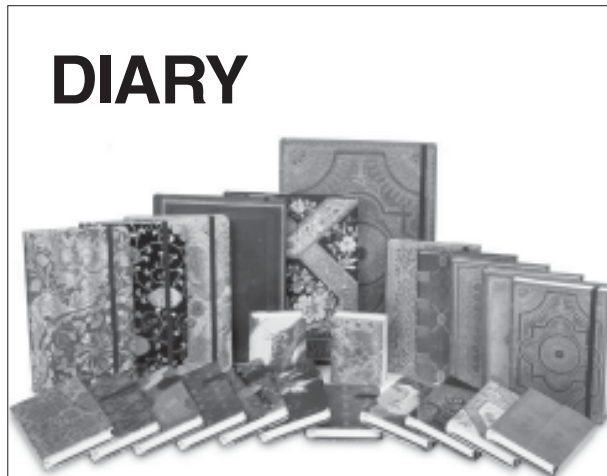
HCI yearly commitments to support the complete care and rehab of 5 spinal cord injured young patients, education & rehab of 25 disabled youth, at Amar Seva Sangam Rs.44.15 Lakhs

### 8.2 Mumbai Marathon 2013:

Mumbai Marathon 2013 was a grand success for us. As in the past, the Secretary participated in the Wheel Chair event and Smt. Ramani Sankara Raman in the Dream Run category of Mumbai Marathon on 20<sup>th</sup> January 2013. We are thankful to Mr. Anirudh who participated in Mumbai Marathon 2013 and ran for us in Full Marathon race. As years progress, our image is getting projected more and more amongst the Mumbaitees and now many people are familiar with our activities. We exceeded our target of Rs.40 lakhs. At a colourful ceremony in Mumbai on **10.04.2013 Highest Fund raising couple award was received by the Secretary and Mrs. Ramani Sankara Raman in Mumbai Mumbai Marathon 2013.**

### 8.3 Diary Project:

The Diary project started in 2001 is a source of fund raising. Consequent to the untiring efforts of Public Relations Souvenir Diary Department, we were able to rope in more customers for the diaries and calendars. Due to steep increase in the cost of paper, the prices of diaries have gone up. However, our team was able to achieve our target. Our Souvenir Diary is a prestige diary and the sale of this diary is picking up year after year. This year we also supplied calendars to many organizations – big and small. During 2012-13 this department was able to raise Rs.15.28 lakhs and during 2011-12 it was Rs.16.73 lakhs.



### 8.4 Source of Fund Raising-2012-2013

- |                         |                   |
|-------------------------|-------------------|
| 1. Diary project        | - Rs. 4.93 lakhs  |
| 2. Advertisement Diary  | - Rs.9.31 lakhs   |
| 3. Building Corpus      | - Rs. 48.95 lakhs |
| 4. Other Corpus         | - Rs. 60.70 lakhs |
| 5. Mumbai Marathon      | - Rs. 43.00 lakhs |
| 6. Non-Corpus Donations | - Rs.278.66 lakhs |

### 8.5 Area-wise distribution of donation

REGION	Total No. of Donors 2011-12	Rs. in Lakhs 2011-12	Total No. of Donors 2012-13	Rs. in Lakhs 2012-13
FOREIGN	75	79.15	43	55.20
OTHER STATES	645	95.90	550	116.07
TAMIL NADU	2169	162.08	1954	184.05
LOCAL	1016	44.97	889	42.02
<b>TOTAL</b>	<b>3905</b>	<b>382.10</b>	<b>3436</b>	<b>397.34</b>

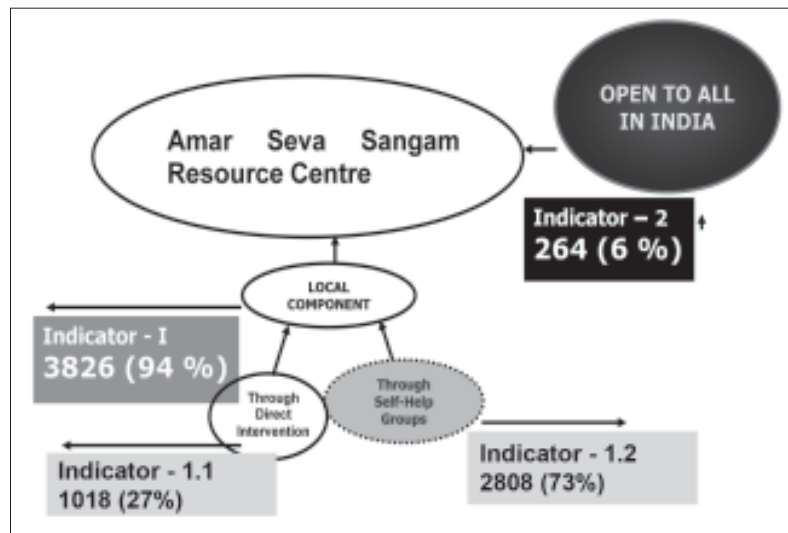
### 8.6 The donor support base

Donation Range	Total No. of Donors 11-12	Rs. in Lakhs 11-12	Total No of Donors 12-13	Rs. In Lakhs 12-13
Rs.1 - 100	284	0.19	103	0.09
Rs.101- 499	233	0.56	151	0.37
Rs.500- 999	404	2.16	358	1.88
Rs.1000 - 4999	1815	30.92	1652	29.06
Rs.5000 - 9999	576	31.66	500	28.45
Rs.10000 - 99999	539	93.45	609	120.49
Rs.100000 & Above	54	223.16	63	217.00
<b>TOTAL</b>	<b>3905</b>	<b>382.10</b>	<b>3436</b>	<b>397.34</b>



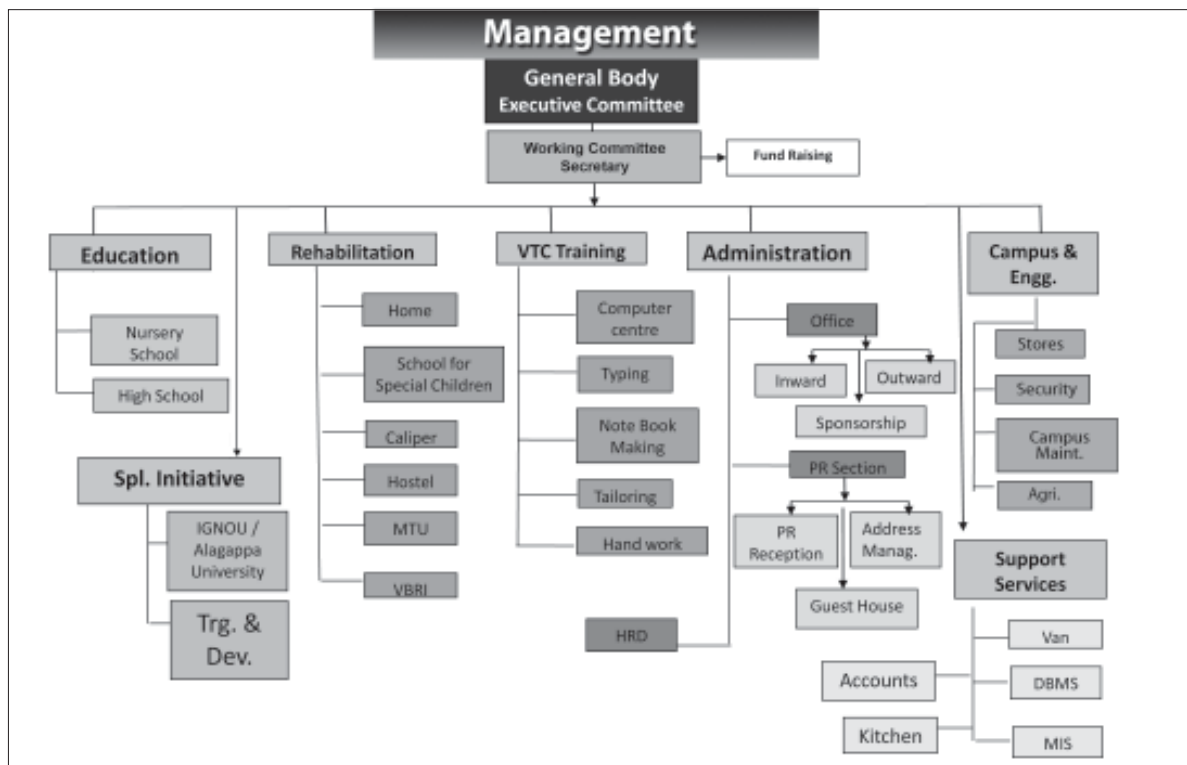
## 9. Management & Governance

### 9.1 Concept

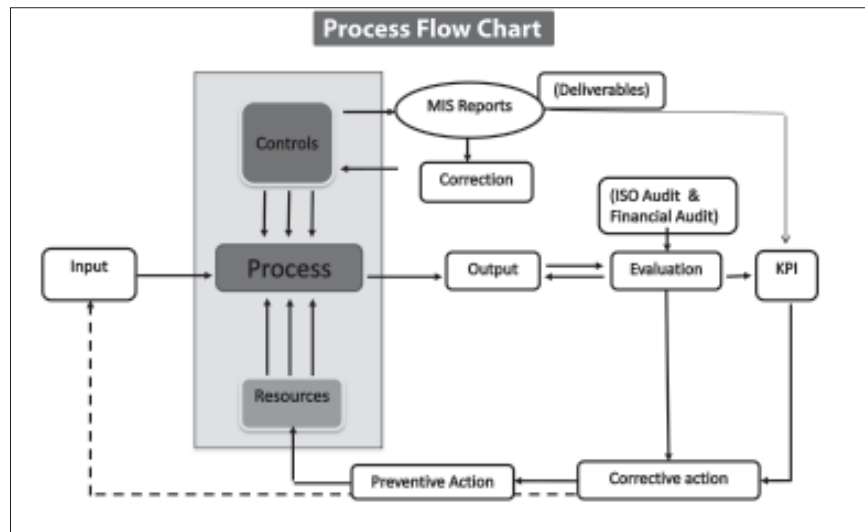


- The Sangam is conceptualized as a major resource center of the nation where disabled persons from all over the country will be the major service users.
- The resource centers of the Sangam will also cater to the people in the self help groups of disabled persons which are formed in the villages.

#### 9.1.1 Organizational Chart



## 9.1.2 Operational & Controls



### Controls:

- \* Deliverables at department, section and individual levels
- \* Management information systems for continuous monitoring
- \* Documentation that records the activities for verification and Reports that will assess the performance.
- \* Evaluation of output

Key Performance Indicators for every process to assess the efficiency and effectiveness. These processes are guided by ISO except for accounts. The accounts are guided by the accounting standards and the financial audit and reporting both internal and statutory.

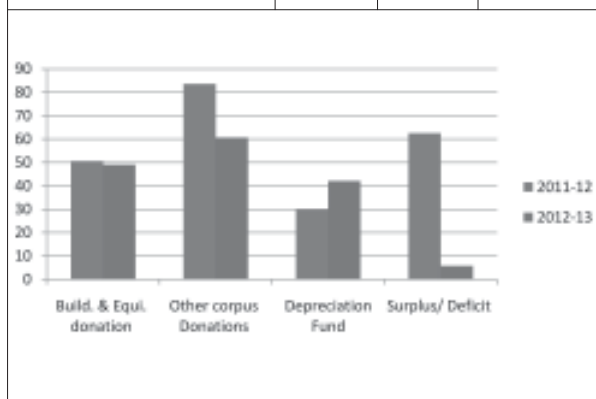


Amar Institute of Rehabilitation Science was inaugurated by Shri Mukund Kulkarni.

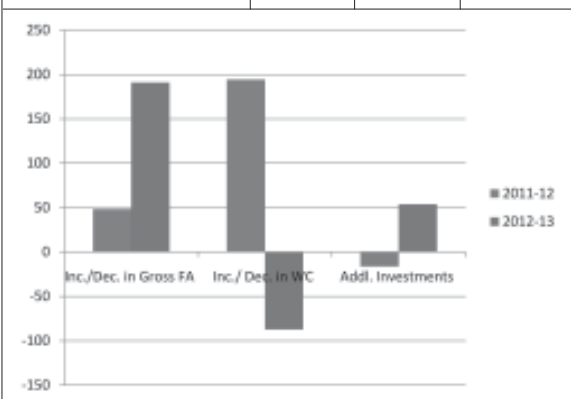


## 10. Finance

Sources	2012-13	2011-12	Variance in %
Build. & Equi. donation	49.05	50.55	97%
Other corpus Donations	60.60	83.62	72%
Depreciation Fund	42.08	29.79	141%
Surplus/ Deficit	5.77	62.49	9%
	<b>157.50</b>	<b>226.45</b>	<b>70%</b>

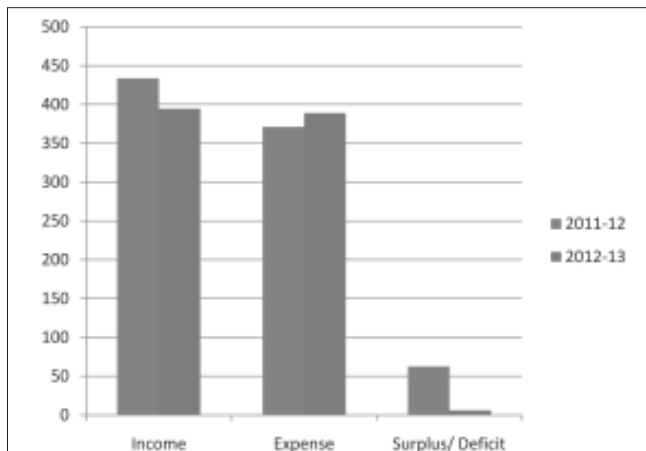


Applications	2012-13	2011-12	Variance in %
Inc./Dec. in Gross Fixed Assets	190.95	48.34	395%
Inc./ Dec. in Working Capital	-87.18	194.37	-45%
Addl. Investments	53.73	-16.26	-330%
	<b>157.50</b>	<b>226.45</b>	<b>70%</b>



### 10.2 Total Income & Expenditure (Rs.In Lakhs)

	2012-13	2011-12
Income	394.59	433.59
Expense	388.82	371.10
Surplus/ Deficit	5.77	62.49



ABRIDGED BALANCE SHEET AS ON 31.03.2013		
SOURCES OF FUNDS		
Particulars	as at 31.03.2013	as at 31.03.2012
<b>Capital Account</b>		
Corpus	1232.14	1122.49
General Fund	5.83	5.83
Government Grant	6.20	6.20
Private Grants	97.24	97.24
<b>TOTAL</b>	<b>1341.41</b>	<b>1231.76</b>
<b>APPLICATION OF FUNDS</b>		
Fixed Assets	501.53	351.92
Capital Work in Progress	1.50	2.23
Investment	578.11	524.37
Accumulated Deficits	82.55	88.33
Net Working Capital	177.72	264.91
<b>TOTAL</b>	<b>1341.42</b>	<b>1231.76</b>
ABRIDGED INCOME AND EXPENDITURE AS ON 31.03.2013		
<b>Income</b>		
Particulars	as at 31.03.2013	as at 31.03.2012
Donation	287.69	286.24
Other Income	35.73	22.83
GOVT. Programme Income (NPRPD, VKP, Patient counsilar & SSA IEC Prog. Exps.)	22.29	83.32
Interest Income	38.83	33.38
Training IG Project	2.35	1.66
Production IG Project	7.69	6.18
	<b>394.59</b>	<b>433.59</b>
<b>Expenditure</b>		
Particulars	as at 31.03.2013	as at 31.03.2012
Developmental Rehabilitation	117.53	101.01
Early Intervention Centre	2.27	-
Home Expenses	22.98	19.90
Sangamam School for Special Children	22.61	19.00
Medical Testing Unit	24.37	17.81
Spinal cord injury post acute care centre exps.	17.97	14.18
Caliper Expenses	4.67	3.19



Village Based Rehabilitation	29.40	14.79
School	41.48	38.06
Vocational Training Expenses	1.45	1.07
Delivery of Services & Infrastructure	4.32	3.24
Public Communication & Administration	30.93	22.36
GOVT. Programme Expenses (NPRPD, VKP, Patient counsilar & SSA IEC Prog. Exps.)	26.83	85.17
Prior Period Items Adjusted	(0.09)	1.31
Depreciation Write back	-	0.24
<b>Surplus/Deficit before Depreciation</b>	<b>47.85</b>	<b>92.28</b>
Depreciation	42.08	29.79
<b>Surplus/Deficit</b>	<b>5.77</b>	<b>62.49</b>
	<b>394.59</b>	<b>433.59</b>



## **M. Srinivasan & Associates**

Chartered Accountants

No. 5, 9th floor, B-Wing Parsn manere  
602, Anna Salai, CHENNAI – 600 006  
Phone : 2820 23 81, 2820 23 82, 2820 23 83  
Email : msacas@eth.net

### **AUDITORS REPORT**

We have audited the attached Balance Sheet of AMAR SEVA SANGAM, SULOCHANA GARDENS, 7-4-104 B, TENKASI ROAD, AYIKUDY – 627 852 (herein after called Trust) as at 31st March 2013 and also the attached Income and Expenditure Account for the year ended on that date annexed thereto. These financial statements are the responsibility of the Trust committee. Our responsibility is to express an opinion on these financial statements based on our audit.

We conducted our audit in accordance with auditing standards generally accepted in India. Those standards require that we plan and perform the audit to obtain reasonable assurance about whether the financial statements are free of material misstatement. An audit included examining, on a test basis, evidence supporting the amounts and disclosures in the financial statements. An audit also includes assessing the accounting principles used and significant estimates made by management, as well as evaluating the overall financial statement presentation. We believe that our audit provides a reasonable basis for our opinion.

1. We have obtained all the information and explanations, which to the best of our knowledge and belief were necessary for the purposes of the audit.
2. In our opinion, proper books of accounts as required by Trust Act and Rules thereunder and Bye Law of the Trust have been kept by the Trust which give all information required by the Act and in the manner so required.
3. The Balance Sheet and the Income & Expenditure Account dealt with by this report are in agreement with the books of accounts of the Trust. In our opinion and to the best of our information and according to explanation given to us, the said accounts give all the information required by the Trust Act, and Rules therein in the manner so required and give a true and fair.
  - i. In the case of Balance Sheet of the state of affairs of the Trust as at 31st March 2013.
  - ii. In the case of Income and Expenditure Account of the excess of expenditure over income (Deficit) of the Trust for the year ended on the date.

For **M. SRINIVASAN & ASSOCIATES**  
Chartered Accountants.  
FRN : 0040505

Sd/-  
R. Mohan  
Partner  
M.No. 022460

Place : Chennai  
Date : 23.08.2013

## NOTES ON ACCOUNTS

### 1. Significant Accounting policies

#### a) Sangam Overview:

Amar Seva Sangam was incorporated in the year 1981 as a Charitable Trust registered under Tamilnadu Societies Registration Act, 1975 vide certificate no TSI 16/1981 a model center catering to all the needs of the disabled.

#### b) Basis of preparation of financial statements.

The financial statements have been prepared and presented under the historical cost convention on the accrual basis of accounting and comply with the Accounting Standards issued by the Institute of Chartered Accountants of India to the extent applicable. The financial statements are presented in Indian rupees.

#### c) Use of estimates

The preparation of financial statements in conformity with generally accepted accounting principles (GAAP) requires management to make estimates and assumptions that affect the reported amounts of assets and liabilities and the disclosure of contingent liabilities on the date of the financial statements. Actual results could differ from those estimates. Any revision to accounting estimates is recognized prospectively in current and future periods.

#### d) Fixed assets and depreciation

Fixed assets are carried at cost of acquisition less accumulated depreciation. The cost of fixed assets includes freight, duties, taxes and other incidental expenses relating to acquisition. Depreciation is provided on the written down method as per the provisions of Income tax Act 1961.

#### e) Inventories

Inventories are carried at the lower of cost and net realizable value.

Cost comprises purchase price and all incidental expenses incurred in bringing the inventory to its present location and condition. The method of determination of cost is as follows:

- \* Finished goods - at cost of production based on direct costing / landed cost on a first in first out method
- \* Stores and spares - at landed cost on a first in first out method

#### f) Retirement benefits

Contributions payable to the recognized provident fund, which is a defined contribution scheme, are charged to the profit and loss account. Gratuity and leave encashment costs, which are not under defined benefit schemes, have not been accrued in the books by way of any provision.

#### g) Revenue recognition

Donations are accounted on cash basis. Earmarked and specific donations are accounted appropriately in the books and the same is utilized for the purpose for which it is received. The funds received on account of non earmarked/general will be used as per the discretion of the Trustees.

Interest on deployment of surplus funds is recognized using the time proportionate method based on underlying interest rates and the same is taken to specific earmarked funds wherever mandated by the donor. In all other cases it is taken to revenue.

Interest Income recognized in the books separately and disclosed as Income separately for non earmarked funds.

#### **h) Foreign exchange transactions**

Foreign currency transactions are recorded at the rates of exchange prevailing on the dates of the respective transaction.

#### **i) Provisions and contingent liabilities**

The Sangam recognizes a provision when there is a present obligation as a result of a past event that probably requires an outflow of resources and a reliable estimate can be made of the amount of the obligation. A disclosure for a contingent liability is made when there is a possible obligation or a present obligation that may, but probably will not, require an outflow of resources. Where there is a possible obligation or a present obligation that the likelihood of outflow of resources is remote, no provision or disclosure is made.

Provisions for onerous contracts, i.e. contracts where the expected unavoidable costs of meeting the obligations under the contract exceed the economic benefits expected to be received under it, are recognized when it is probable that an outflow of resources embodying economic benefits will be required to settle a present obligation as a result of an obligating event, based on a reliable estimate of such obligation.

#### **j) Investment**

The Investments are recorded in the books at cost and fixed Deposits at the end of each year include accrued Interest in case of deposits deployed under Reinvestment plan.

### **2. Capital commitments and contingent liabilities**

Description	31 <sup>st</sup> March 2013 (in Rs.)	31 <sup>st</sup> March 2012 (in Rs.)
I. Estimated amount of contracts remaining to be executed on capital account (net of advances) and not provided for	Nil	51,19,737
II. Contingent liabilities: a) Bank Guarantee given	Nil	1,60,816

3. Previous years' figures have been regrouped/ reclassified wherever necessary to conform to the current year's presentation

4. The Surplus is earmarked for the construction of water re-cycling project.

For **AMAR SEVA SANGAM**  
**S. Sankara Raman**  
Secretary



## 11. Other Disclosures

Particulars	For the financial year: 2011-2012
Income Tax	10.01.2014
Registrar of Societies/ Trusts/ Charity Commissioner / Companies	24.10.2013
FCRA	19.10.2012
<b>NAME &amp; LOCATION</b> of your organization's auditor :	M/s. M. Srinivasan & Associates Chartered Accountants No.5, 9 <sup>th</sup> Floor, B Wing, Parson Manere, 602, Anna Salai, Chennai - 600 006

### 11.9 Salary slabs

Slab of gross salary (in Rs) plus benefits paid to staff (per month)	Male staff	Female staff	Total staff
Less than 5000	17	46	63
5,000 – 10,000	62	49	111
10,000 – 25,000	24	13	37
Above Rs. 25,000	00	00	00
<b>Total</b>	<b>103</b>	<b>108</b>	<b>211</b>

### 11.10 Staff remuneration [Gross yearly + benefits] in Rupees in 2012-2013

Head of the organisation: (including honorarium) **Rs. 0** per year  
Highest paid person in the organization (staff or consultant): **Rs.2,43,720/-** per year  
Lowest paid person in the organization (staff or consultant): **Rs.28,680/-** per year

**11.11 Total Cost of International Travel by Board Members/Staff/ Volunteers on behalf of organisation for 2012-2013: Please provide travel details of ALL members : NIL**

**11.12 Total Cost of National Travel by Board Members/Staff/ Volunteers on behalf of organisation for 2012-2013 (This should NOT include local conveyance) Rs.2,33,119/-**

**11.13 Annual Gross Remuneration paid to members of your Statutory Governing Body by this organisation (in case of no remuneration please write "ZERO"). Please fill in name of each Board Member and against the same mention remuneration, if any, or ZERO as the case may be:**

**Please note: 'Remuneration'** means: salary, honorarium, allowances, sitting fee for attending board meetings and any other compensation that is a payment for time/effort/skills and not a reimbursement of actual out-of-pocket expenses.

S. No.	Name	Date this Member was first elected to the Board	Gross Remuneration PER ANNUM (Rs.)
1	S. Ramakrishnan	01.06.1981	ZERO
2	M.R. Srinivasan	19.02.1991	
3	S. Sankara Raman	22.03.1992	
4	S.S. Kandaswamy	13.09.2009	
5	S. Pattammal	28.09.1997	
6	K. Chidambaram	01.06.1981	
7	S. Sumathi	08.06.1992	
8	K. Murugiah	28.08.2011	

#### 11.14 Amount reimbursed (in Rs.) to ALL Board members in the financial year 2012-2013 for the following items:

**Please note: ‘Reimbursement’** means: actual/estimated expenses like conveyance, communication, travel, etc. related to the role being discharged, i.e., for a Board member, reimbursement of a car & driver’s salary throughout the year should be classified as remuneration and not as reimbursement.

1	International Travel	Rs. Zero
2	Domestic Travel	Rs. Zero
3	Local Conveyance	Rs. Zero
4	Entertainment Expenses	Rs. Zero
5	Others	Rs.4,33,933.00

## 12. General

### 12.1 Foundation For Excellence (FFE) INC, Mumbai

This is yet another philanthropic activity monitored and coordinated by Amar Seva Sangam. During the year 2012-13, twelve financially backward but outstanding students studying in different higher secondary schools, colleges and polytechnics including professional colleges were awarded financial assistance extended by Foundation For Excellence, Mumbai.

### 12.2 Media Coverage:

One of the main strengths of the organization has been the wide coverage it has received through the newspapers, TV, Radio, books, journals and magazines. Year after year the coverage is expanding. During the Mumbai Marathon 2013 Amar Seva Sangam’s image was widely projected by local TV channels at Mumbai and in local newspapers - both English and vernacular.

## WORDS OF ENCOURAGEMENT

**25.06.2012**

Today, it is a great occasion to visit this Amar Seva Sangam. I feel so happy and pleasant.

**S. Gokula Indira**

Minister for Tourism

**22.07.2012**

Service to Mankind is Service to God. Yes. In Amar Seva Sangam I have seen this motto in reality. Words are inadequate to appreciate their service rendered to the physically and mentally challenged person to make them differently abled person to lead a respectful life livelihood with dignity.

My best wishes, With regards,

**N. Arunachalam, Judge, Sankarankoil, Tirunelveli Dist.**

**02.09.2012**

“A home away from Home” is the reality. After having been visited this Amar Seva Sangam it is totally proved. This Amar Seva Sangam is the Shanthi Niketan of Tamilnadu in various aspects. The team headed by

the President particularly Thiru. Sankara Raman is very much committed for this institution. The children those are studying are very much gifted. All are talented no one left out without talent -this has been seen in the cultural programs of the children. I appreciate the team for their commitment and wish all the best for everyone.

**Dr. D. Rajendran,**

Joint Director of School Education, Chennai

**17.10.2012**

“Live to Serve.” If every one of us follow this, I think the world will never have any problem. Only Joy. Serving to the mankind is Service to the Almighty. I have witnessed this is “Amar Seva Sangam”

**S. Sivagnanam,**

Director, MSME Development Institute, Chennai

**15.12.2012**

Absolutely thrilled and privileged to have visited this esteemed organization and to have met the Founder President as well as the Honorary Secretary. Both Mr. Ramakrishnan and Mr. Sankara Raman are huge

inspirations to all others. Also, it's high time you utilize another showcase/rack to accommodate the plentiful awards and citation that you have for your credit! You just cannot accommodate them in one! Privileged, honoured, and thoroughly 'moved', we leave, wishing you the very best in all your endeavours!

**LT. CDR. Pranjal Sinha**

On behalf of our officers and sailors of INS Kattabomman.

I am a third generation visitor to this wonderful charitable institution. After overcoming his greatest tragedy out of divine will power Mr. Ramakrishnan has been a blessing to the under privileged, marginalized and differently abled brethren. I am literally thrilled over my visit to this glorious divine institution where I find full of compassion, hope & comfort. I could feel the delight in the children who blossoms with all best atmosphere & infrastructure and they are really privileged. I wish this institution to rise into a phenomenal university.

**Vijila Sathyananth**, Mayor,  
Tirunelveli City Municipal Corporation.

**27.03.2012**

What a great day for me to interact with special children and to see the dedicated service of Shri Ramakrishnan and others in the Sangam. I am humbled to see the great service, which has enlightened me to contribute more to the society. Best wishes for their continued service to the society.

**Dr.A.Sivathanupillai**

அமர் சேவா சங்கம் மென்மேலும் உயர எங்களது நிறுவனங்கள் சார்பாக மனமார பிரார்த்திக்கின்றோம்.

**பத்மலோசனி, பெங்குயின் நிறுவனம்**

I and my husband know Amar Seva Sangam for the past 10 years. We wish for its success in coming years and we also want to continue our service to this wonderful organization.

**Lakshmi Subramanian, Trichy**

அமர் சேவாவைப் பற்றி என்ன கருத்துக்கள் எழுத முடியும்? எழுத்தால் வர்ணிக்கவோ பாராட்டவோ முடியாத ஒன்று. நேரில் வந்து பார்த்தால்தான் இவர்களின் சேவை மனப்பான்மை அயராத தளராத உபசரணை அன்பு கலந்த உதவிகள், அனைத்துமே அற்புதம். வாழ்நாளில் சேவை என்பது என்ன என்பதை இங்கே வந்து ஒவ்வொருவரும் தெரிந்து கொள்ள வேண்டும்.

**டெல்லி கணேஷ்**

**01.06.12**

I never expected to see so much at Amar Seva. The work done here is far beyond what I expected to see. I also saw glimpses of hope on the children. The wonderful work done here should be an example not only to India but to the world. What the institution teaches us is that dedication can overcome anything even if the financial resources are scarce. I wish the wonderful story of Amar Seva Sangam will spread throughout the world.

**A.P. Sankaran**

HHH

**18<sup>th</sup> July 2012**

We are deeply touched by the services, you are all rendering to the society.

From today our family join hands with you for the wonderful efforts you are putting for uplifting the so called Differently Abled Society

**Pyramid Natarajan & Family Members**

**12.08.12**

வயிற்றில் சுமந்த தாயும் தோளில் சுமந்த தந்தையும்  
சுமை என நினைத்த குழந்தைகளை  
சுகமாய் சுமைக்கும் சேவைச் சிகரம்.  
திரு. ராமகிருண அய்யா நீங்கள்,  
பல்லாண்டு வாழ்க! வாழ்கவே.

அன்புடன்

**சு. நஞ்சப்பன் எம்.எ.பிஎட்**

**Nfhit – 641 029, 0422 – 2646811**









## Amar Foundation

Amar Seva Sangam income generating activities have increased which had its own tax implications. While the developmental activities are carried on under the categories of Health, Education, Relief to the poor as per the recently amended Income Tax law, the production activities could not be justified since the gross receipts and the income therefrom were disproportionately high compared to the Sangam main activities, which called for immediate action to hive-off those activities to another separate entity. The Sangam as such registered a sister unit as “Amar Foundation” with common members in the Executive board and this became effective from March 2013 as a registered Trust. Amar Foundation will carry on the tailoring and Note Book Making programs and the surplus generated will be transferred to Amar Seva Sangam. Efforts are under way to get the new foundation tax free status. This will help Amar Seva Sangam to maintain its existing privileges under the income tax law and also get the benefit of the income generating activities.

## Projects on Hand

Capital Commitments	Project amount	Probable date of completion
Life Care Centre project for Significant contributors of ASSA	Phase-I Rs.70 lakhs	01-04-2015
Dining Hall Veranda roof concrete	Rs.6 lakhs	31.03.2014
Water Supply project	Rs.50 lakhs	01.04.2014
REC Building expansion work Phase-I	Rs.110 lakhs	01.06.2014
Internal Roads	Estimate getting ready	01-04-2013
Water Recycling Project Phase II	Rs.30 lakhs	01.02.2014
Family Orientation Cottages	Rs.40 lakhs	Next Two years
Estate Officer Room with Security Booth & Admin	Rs.35 lakhs	
Disabled Staff Qtrs.	Rs.40 lakhs	
Solar Lighting Systems	Rs.40 lakhs	
Meditation Hall	Rs.40 lakhs	
Hydro Therapy Centre	Rs.40 lakhs	
Compound Wall at ASSA	Rs.200 lakhs	

## Fund Raising

The first and foremost priority for the current year is, undoubtedly, **Fund Raising** so that the erasing of the deficit which started last year is continued this year also and the deficit is totally wiped out.

The target for non-corpus fund mobilization for the year 2013-14 is Rs.3.5 crores.

## Human Resource Development:

Training need assessment based on gap analysis to make the human resources as close to the organizational needs and expectations as possible and providing opportunities of self development and growth within the organization is an important necessity for any organization to ensure sustainability and systems driven operations. For the year 2013-14 the priority is to study the gap and initiate process to bridge the same. Identification and grooming of second and third line management for effective growth of the organization has become a vital component. The focus for the coming years will be on these lines.

### **Consolidation of Internal Management Process**

The Internal Management Process (IMP) which has been established since last year will be further consolidated and refined and will be internalized during the year 2013-14. It will strengthen the operational controls of the organization and get the full benefit of the ISO.

### **Energy Cost Saving**

We need to work on alternate energy sources which poses great challenges for the organization. Solar Energy is capital intensive and the maintenance cost invariably discourages such an investment. The indirect benefits due to clean environment can be a good logic in support of solar energy. Solar energy without batteries for day time power conservation is also being examined for its feasibility.

### **Water Problem**

The most important need of the hour is water. The water tables have gone down and we don't get any water from the bore-wells even during the rainy seasons. At present we are buying water at very expensive rates. There are nearly 230 residents in the campus and the floating population of school children, people coming for therapy, special education, vocational training and higher education is around 1200 on any working day. There are more than 40 cows which we are maintaining for our milk needs and also for bio-fertilizer. The garden orchids and various trees inside the campus also need minimum water for survival. Our daily need for water is about 100,000 ltrs. Currently we get water from TWAD Board under Tamirabarani Scheme around 20,000 ltrs of water per day on average. Provision of the balance water is our major requirement. Our approach is to tap water from nearby source and also recycle our drainage and sewage sources for gardening purposes through a suitable treatment plant. The total cost is between Rs.80 and Rs.90 lakhs. We are approaching various corporates for raising funds for this project.

### **Need for a Road:**

Our premises at Aiykudy houses several buildings including integrated Schools, Administrative and office blocks, Hostels for physically challenged, various vocational centres, Dining hall, Rehabilitation and investigation centres and Guest house. We have two cement roads to connect some of these buildings. Kacha roads connect other buildings with these roads. These roads were constructed some 6 years ago and are common for vehicle and pedestrians and wheel chairs. Some of the buildings have barrier free approach from these roads, but the roads themselves do not have exclusive barrier free walk ways for wheel chair and other mobility devices dependent people.

The cement roads have also worn out at some places due to constant use. Further, it is also required to extend the roads to cover proposed additions to buildings. We need good roads and this has become a high priority due to the following reasons:

- Around 1,500 pedestrians, 200 two wheelers and 30 four wheelers use these roads on a daily basis besides 10 pick-up vans making around 10 trips every day.
- The pedestrians include our physically challenged inmates and visitors
- Around 150 wheel chair users, 300 users of crutches and 50 children transport trolleys need these roads for daily use

As the roads have not been suitably designed for the convenient use of the disabled

- ◆ Their movements are restricted in a big way currently
- ◆ Due to the uneven surfaces and absence of good walk ways all along, their gaits become different and make it more difficult for them

- ◆ They cause muscular contraction resulting in more deformity and create set back to the gains of our treatment

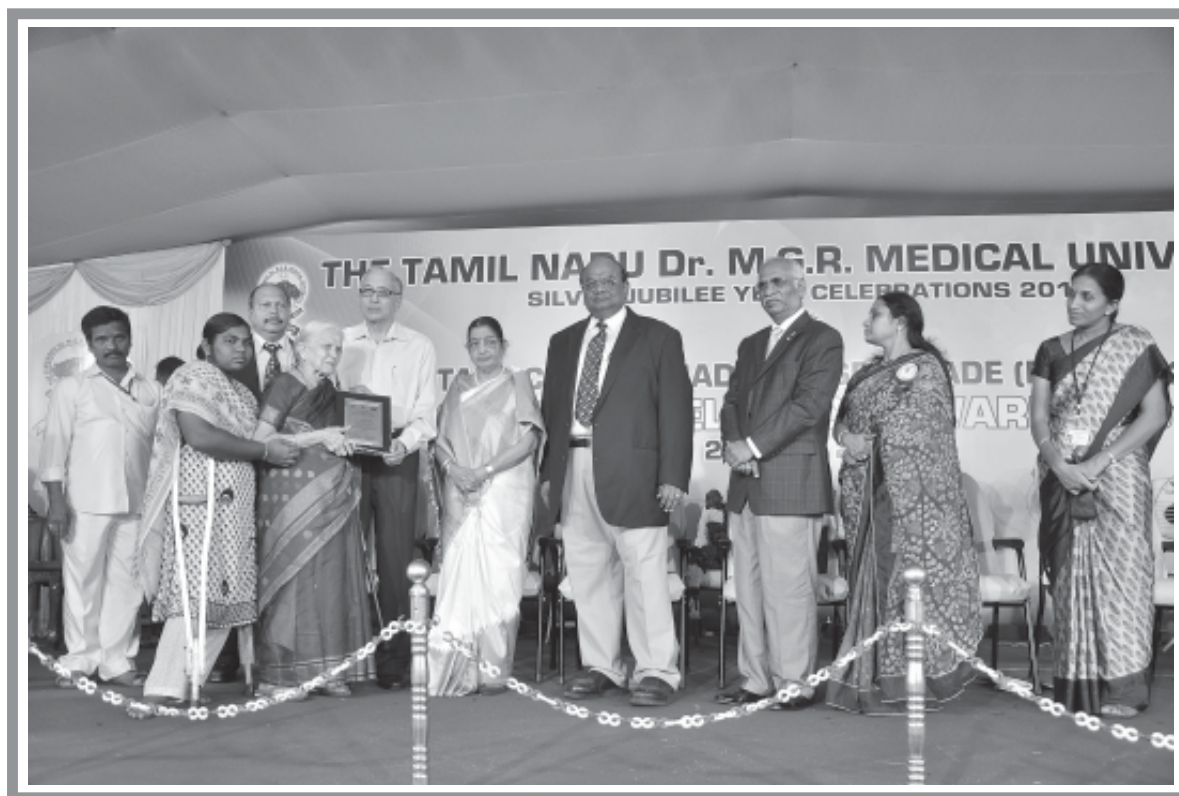
It is proposed to reconstruct these roads suitably as follows.

Suitably strengthening the existing road and relaying the specific parts which are beyond repair and extending the roads to replace kacha roads for a total length of around 550 metres.

### Life Care Centre

At present, accommodation is provided for a few essential staff members who are also disabled within the premises. The Honorary Secretary Shri S. Sankara Raman and Dr S. Sumathi, Member Executive committee and In-charge of Study centres and Vocational activities have been provided with Quarters facility within the premises. Many people including the President and Secretary have contributed their entire life to the Sangam without taking back anything in return. It is desired to build 6 cottages in 3 independent buildings – 3 in Ground floor and 3 in First floor.

- ◆ 4 units (around 750 sq ft each) would have a Hall, Bedroom with attached bath and Kitchen.
- ◆ 2 units (around 440 sq ft each) would have a Reception cum waiting hall and a Bedroom with attached bath.



Life Time Achiever Award (Rotary Club of Explanade at Dr. MGR Medical University) received jointly

# Conclusion

Amar Seva Sangam has completed thirty two years of meritorious service towards rehabilitation of the differently abled. From a humble beginning in 1981 it has today grown as a premier institution in the field of Disability Management not only because we were able to adjust ourselves to demanding situations but also because of the guidance of our Patron-in-Chief, Dr. M.S. Swaminathan and the other patrons Shri N. Vaghul and Shri S.V. Mony besides the support of Executive Committee members, General Body members, Advisory Board members, past ex-officio Chairmen, etc. We are grateful to all government officials. We are indebted to all our Volunteers both in India and abroad who are helping our Sangam and adding glory to it from behind the scene. Our thanks are also due to Messrs. Kumar, U. Shekhar and G. Ramakrishnan of Galaxy Surfactants (all from Mumbai), Hema Ganesh of Delhi, Nalini Ramachandra of Pune, Shanthi Balasubramanian and R.P.Krishnamachari (both from Chennai). Our special thanks to Shri Rajan Babu of Pune for preparing the lyrics, composing the music and releasing a devotional CD with the help of popular artists in aid of Amar Seva Sangam. The release function was a fundraiser for Amar Seva Sangam where the sponsorships and sale of CDs netted more than three lakhs for the organization. We shall be failing in our duty if we do not thank Smt. Sulochana Krishnamoorthy of Handicare International, Canada, who has been constantly endeavouring to raise funds for our various activities. Our thanks are also due to our Statutory Auditors, Legal Advisors, Consultants, Doctors, etc. Our special thanks to The Tamilnad Mercantile Bank Ltd. Thoothukudi and Messrs.G.R. Thangamaligai Jewellers, Chennai, who have been consistently supporting us in bringing out the Annual Report. We also owe our gratitude for Shriram Group of Companies for their large order for diaries regularly for the last four years. Last but not least, our thanks are due to our hard-working staff who continue to put their heart and soul in discharging their duties towards achieving our goal, viz. establishment of the “**Valley for the Disabled**”. It is with pride we record here that our staff have given wonderful cooperation in our endeavour to implement various HRD programmes and also closely following the norms set by ISO.

## ADIEU

**S. Sankara Raman**  
Hony. Secretary

**S. Ramakrishnan**  
Founder President



## DONATION OPTIONS

	SPONSOR SCHEMES*		Amount	
1.	Sponsorship to train a disabled youth for six months		9,000	
2.	Sponsor a child in Home care (1/3 <sup>rd</sup> ) per annum		3,600	
3.	Sponsorship of Spinal Injured undergoing Post-Acute Care - (per month)		12,000	
4.	Sponsorship of Professional Education of a disabled student - (per annum)		60,000	
5.	Sponsorship of Higher Education of a Disabled Student – (per annum)		36,000	
6.	Sponsor three school children Education for one year		10,000	
7.	Sponsor a classroom of 30 school children Education for one year		100,000	
8.	Sponsorship of Medicines for a Mentally Challenged child – (per month)		500	
9.	Sponsorship of a Mentally ill person undergoing rehabilitation - (per month)		500	
10.	Sponsorship of Maintenance of wheelchairs and Tricycles – (per appliance)		500	
FEEDING SCHEMES*			REGULAR	SPECIAL
11.	One Lunch Feeding (For Home children)		1000	1250
12.	One Lunch Feeding (For Mentally challenged children)		2000	2500
13.	One Lunch Feeding (For Physically Challenged Youth Trainees)		2000	2500
14.	One Lunch Feeding (For all children)		5000	7500
15.	One Day Feeding all children		15,000	NA
16.	Campus Feeding for all children and staff for lunch		15,000	NA
17.	Kamadhenu (One time payment for feeding 10 children once a year)		2,500	NA
PATRON SCHMES*				
18.	Annual Patron			1,000
19.	Fellow Patron			5,000
20.	Annual Corporate Patron			10,000
21.	Life Time Patron**			10,000
22.	Life Time Corporate Patron**			1,00,000
ENDOWMENT SCHEMES *				
23.	Sri Vidya Education Endowment			50,000
24.	Dhanvanthiri Medical Endowment			50,000
25.	Amudhasurabhi Rehabilitation Endowment			50,000
CORPORATE SCEHMES in lakhs				
26.	CORPORATE SPONSOR			Rs. 10
27.	CORPORATE CO- SPONSOR			Rs. 5 Lakhs
28.	CORPORATE JT. CO- SPONSOR			Rs. 2 Lakhs
29.	CORPORATE DAY SPONSOR			Rs. 1 Lakh
OTHER SCHEMES				
30.	Adopt 600 Villages ( per annum)*			28.65 Lakhs
31.	Adopt 100 Villages (per annum)*			4.45 Lakhs
32.	Adopt 25 Villages (25% of expenses per annum)*			1.12 lakhs
33.	General Donations*			Any amount
34.	Buildings**			Any amount

\* Eligible for 100% deduction u/s 35 AC.

\*\* Eligible for limited deduction u/s 80G

தங்கக்  
கனவுகள்  
நிஜமாகும்  
மங்களத்  
தருணம்

**GRT**

**G.R.Thanga Māligai  
JEWELLERS**  
Since 1964

தங்கம் உ வைரம் உ பிளாட்டினம் உ வெள்ளி

சென்னை | ஓசூர் | கும்பகோணம் | மதுரை | தஞ்சாவூர் | திருச்சி | திருவள்ளூர் | விருத்தாசலம் | புதுச்சேரி

பெங்களூரு | ஹைதராபாத் | திருப்பதி | விசாகப்பட்டினம்

Shop online at: [www.grtjewels.com](http://www.grtjewels.com) Follow us on [f](#) [t](#) [in](#) Ample parking available 

**TOLL FREE**  
180 0425 0426



**...get the power  
to be free**



**Savings Account**  
Premium • NRE Premium

**Current Account**  
Silver • Gold • Pearl  
Platinum • Diamond

**Enjoy Free Internet Banking**  
Now available to  
Partnerships/Companies/HUF also

Freedom comes with lot of Freebies

- Free multicity cheque leaves
- Free Demand Drafts
- Free email statements
- Free intracity clearing/transfer
- Free TMB Surabhi ATM card
- Free SMS banking
- Free ECS facility
- Free E-Connect - net banking
- Free E-Payment facility
- Free accident Insurance coverage
- Free RTGS/NEFT inward & outward
- Speedy collection of local/outsation cheques at all our 215 branches
- Convenience of remittance and withdrawal at all our 215 branches
- Nominal charges for other facilities



**Tamilnad Mercantile Bank Ltd.**

*Customer Oriented & Committed to Excellence*

Regd. Office : 57, V.E.Road, Thoothukudi-628 002 Website: [www.tmb.in](http://www.tmb.in)

Conditions Apply



**You can reach us by  
train / air as under**

**You can reach us by train / air as under**

**TRAINS :**

**Chennai to Tirunelveli**

Nellai, Kanyakumari, Ananthapuri & Guruvayur Ex-presses

**Chennai to Tenkasi**

(Podhigai Express - Daily)

**Daily passenger train from Madurai**

Connecting Chennai - Madurai (Pandian Express)

**Distance :**

Tirunelveli to Ayikudi 60 kms by road and Tenkasi to Ayikudi 6 kms by road

**Airlink :**

Madurai / Tiruvananthapuram - Ayikudi is about 31/2 hours drive from Tiruvananthapuram & Madurai Airport



**AMAR SEVA SANGAM**

Sulochana Gardens, 7-4-104B, Tenkasi Road, Ayikudy - 627 852  
Tirunelveli District, Tamilnadu, South India



ISO 9001  
FS 523494